



# ACCESSORIES

FOR YOUR ADVENTURE MACHINE

- BMW GT / GTL
- BMW GS SERIES
- SUZUKI VSTROM
- HUSQVARNA TR 650
- DUCATI MULTISTRADA
- YAMAHA SUPER TENERE
- TRIUMPH TIGER EXPLORER

ALTRIDER **2014** CATALOG





# ADVENTURE EVOLVED

Proudly Made in  
**America**

Whether preparing your machine for a daily commute or a long adventure, we hope you've discovered our premium protection pieces. From start to finish, you'll see we have painstakingly pored over every detail so that our products are suitable to install on your machine. Each protection piece crafted by AltRider functions well, looks good on your bike, and can truly stand up to brutal off-road conditions. Everything from the precision fit of the crash bars to the AltRider-original corrugated channels on the skid plates – it all fits perfectly. Our products are the real deal – 100% designed and manufactured in America.

**Venture On.**



- 2 CRASH BARS
- 4 SKID PLATES
- 6 LUGGAGE RACKS
- 8 BMW R 1200 GS WATERCOOLED
- 10 BMW R 1200 GS
- 12 BMW F 800 GS / F 700 GS / F 650 GS
- 14 DUCATI MULTISTRADA 1200
- 16 TRIUMPH TIGER 800 / 800XC
- 18 YAMAHA SUPER TENERE XT 1200 Z
- 20 SUZUKI VSTROM DL 650 / DL 1000
- 22 BMW K 1600 GT / GTL
- 23 BMW G 650 GS
- 24 HUSQVARNA TR 650 TERRA AND STRADA
- 25 ALTRIDER INNOVATION
- 26 ALTRIDER EUROPE
- 27 NEW: SOFT LUGGAGE
- 28 PARTS
- 32 ALTRIDER RIDES



# MORE THAN METAL

AltRider crash bars are designed to take some tough crashes. Most of our crash bars feature a 6.75" billet aluminum connector, seamlessly connecting both sides of the crash bar assembly. While other bars simply use crushed tube or mounting bolts, the AltRider bars translate impact to the entire assembly – not just one side – avoiding damage to your bike.



## CRASH BARS NOT JUST AN ACCESSORY



### BMW R 1200 GS WATERCOOLED

Protect your bike with the most robust bars on the market  
UPPER CRASH BARS AVAILABLE



### BMW R 1200 GS

Smartly designed to wrap around the entire valve cover  
UPPER CRASH BARS AVAILABLE



### BMW F 800 / 700 / 650 GS

The best coverage of your fairings, engine and radiator



### BMW G 650 GS

Provides extensive coverage to the engine, radiator and plastics



### TRIUMPH TIGER EXPLORER 1200

A hidden stash box in a sturdy 1.25 stainless steel bar



### TRIUMPH TIGER 800

Tackle every terrain with 1" diameter hand TIG welded bars



### HUSQVARNA TR 650 TERRA AND STRADA

CNC mandrel bended bars yielding precision and strength



### YAMAHA SUPER TENERE XT 1200

Protect your fairing and radiator with six mounting points  
UPPER CRASH BARS AVAILABLE



### SUZUKI VSTROM 650 / 1000

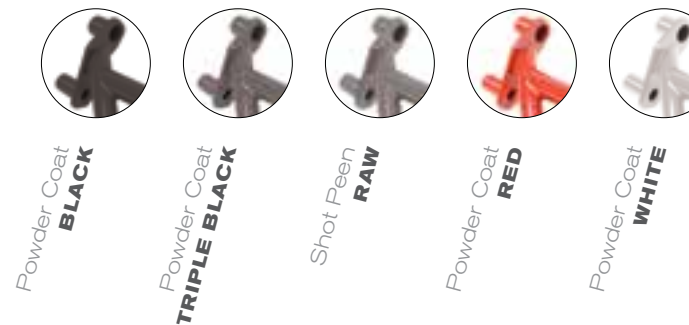
Carefully crafted steel ribs with all contact points considered



### DUCATI MULTISTRADA 1200

Precisely engineered mounts for perfect fitment

#### Stainless Steel Crash Bars FINISH & COLOR GUIDE



### KILLER CRASH BARS

If you're one of those people who believes that adventure touring bikes should be respectfully kept in pristine condition, then by all means turn the page. However, if you're one to embrace epic off-road adventures, then it is without question that you should adorn your machine with the unmatched protection of the AltRider crash bars. There's a reason why the official BMW training school outfits their fleet of BMWs with AltRider Crash Bars. Our customer reviews speak volumes – check them out on [altrider.com](http://altrider.com).

We've all seen it. Everything from a parking lot drop (sometimes at a Starbucks parking lot – hey, we don't judge) to the "turtled" bike on the trail, a crack in the fairings or engine is all it takes to end your adventure. Rest assured, we've come up with the sturdiest solution. Built with precision-manufactured stand-offs that fit directly into the existing motor mounts, these 1" diameter stainless steel bars have been perfected and proven to save your bike from dire situations.





# USE IT AND ABUSE IT

## BUILT TO LAST

Your basic sump protection gets a much needed facelift with the AltRider skid plate that shields the undercarriage of your bike. After taking your bike off-road with one of the AltRider plates, you'll know what we're talking about. A throaty gasp from the engine as you accelerate, followed by a satisfying "clang!" that resounds as debris hits the plate. While you'll find ringers of similar engineering – as the saying goes, imitation is the sincerest form of flattery – the AltRider design beats out any copycats.

*Love the AltRider Skid Plates...  
The one on my F 800 GS has  
saved my bike many times.  
Tough as nails! / Jon G.*

## SKID PLATES RIDE WITHOUT WORRY

### Aluminum Skid Plate COLOR GUIDE



Anodized  
**BLACK**



Anodized  
**SILVER**



#### BMW R 1200 GS WATERCOOLED

The first R 12 plate that's not mounted to the engine



#### BMW R 1200 GS

AltRider original corrugated channels + best header protection for durability



#### BMW F 800 / 700 / 650 GS

The best front header protection to keep rolling on and off-road



#### BMW G 650 GS

Protect your engine from rocks, dirt and debris with this .125 mm thick plate



#### TRIUMPH TIGER 800

Go for a rugged ride without worry deflecting rocks, ruts, and dangers



#### HUSQVARNA TR 650 TERRA AND STRADA

Take the adventurous route with the best sump support



#### KAWASAKI KLR 650

A real protection plate for your rough and tumble machine



#### YAMAHA SUPER TENERE XT 1200

A sump safeguard protecting the stator and headers



#### SUZUKI VSTROM 650

Seamless protection that attaches to the crash bars



#### SUZUKI VSTROM 1000

A vital vest made of 4.75mm anodized aluminum





# LEADER OF THE PACK

Made of 3/16 inch (4.75mm) thick anodized aluminum and flanged to increase strength and provide additional tie downs.



## GET HOOKED

Durable and attractive – our luggage racks feature some of the most high-end finishes on the market including CNC machine-beveled edges and an anodized finish. In order to come up with the perfect layout, the luggage rack patterns were conceived after multiple hook studies comparing different configurations that included hooks, straps, bungee cords and tie downs.

Each bike has a rack featuring versatile options to best master the art of the pack. AltRider racks come pre-drilled to be used with the RotopaX water and fuel cells. We provided an interface for the Givi Monokey systems with an AltRider mount kit.

## LUGGAGE RACKS

HIGH CALIBER CARRY-ONS



### BMW G 650 GS

Get access to your tailbox without removing rack



### BMW R 1200 GS WATERCOOLED

The ultimate rack for adventures long and short



### BMW R 1200 GS

Rear rack, pillion rack or both – choose your own setup



### BMW F 800 / 700 / 650 GS

Get access to your tailbox without removing rack



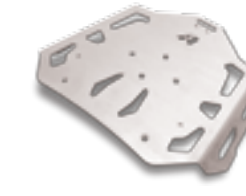
### SUZUKI VSTROM 650

New for 2014—for on or off road rides



### YAMAHA SUPER TENERE XT 1200

Replace your pillion seat with more luggage space



### TRIUMPH TIGER EXPLORER 1200

Easily installs with strategically placed cutouts for various straps



### TRIUMPH TIGER 800

Strategic cutouts for securing your load



### DAUCATI MULTISTRADA 1200

The ultimate for perfecting the art of the pack



**BMW**  
BMW R 1200 GS WATERCOOLED



**CRASH BARS**

Our real world "crash testing" proved these robust bars are built to last



**SIDE STAND FOOT**

3D design allows for easy boot deployment



**RADIATOR GUARD**

Louvers deflect debris while directing airflow to the radiator



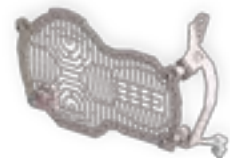
**LUGGAGE RACK**

The ultimate rack for adventures long and short



**SKID PLATE**

The most ground clearance on the market



**HEADLIGHT GUARD**

Protect your lights with interchangeable faces for different riding styles

**COMPLETE CRASH PROTECTION**

Provide absolute crash protection for your liquid cooled GS with the only 1.25" crash bar available and the only skid plate that doesn't mount to the engine.

**STATE-OF-THE-ART PARTS**

BMW's GS line has been a benchmark for adventure motorcycles for over 30 years – the new BMW R 1200 GS raises the bar even higher. With the addition of liquid cooling to the iconic boxer motor, the new GS puts out an impressive 125 horsepower. AltRider's new adventure accessories are the pinnacle of protection for the updated adventure touring icon.

A new bike requires new protection so AltRider evaluated the abuse endured at BMW Off-Road Training schools, yielding critical insight from real crash testing. The AltRider crash bars are made of 1.25" stainless steel tubing resulting in the most robust bars on the market. The skid plate is a 3/16" anodized aluminum and is the only plate that doesn't use the motor as a mount.

**OUTFITTING**  
**AN ICON**

BMW R 1200 GS WATERCOOLED







**CRASH BARS**

Stainless construction means strength and rust-free bars



**UPPER CRASH BARS ASSEMBLY**

For mounting lights and further protection



**SKID PLATE**

Protecting your headers and cross pipe from debris



**FULLY ENGAGED MOUNTS**

Built with precision-manufactured standoffs that fit directly into the frame, AltRider's stout crash bars protect like no other.



**LUGGAGE RACK SYSTEM**

Versatile carrying capacity as one or two racks



**HEADLIGHT GUARD**

Safeguard the expensive headlight assembly in style



**OIL COOLER GUARD**

Aggressive protection for your oil cooler



**INJECTOR PROTECTORS**

Keep fuel flowing in your machine

**ENGINEERED FOR EXCELLENCE**

What can we say about this bike that hasn't been said before? It's not just a bike, it's a lifestyle, a culture – a definition of you as a rider. With the GS, you don't think twice about taking the off-road route home, crossing state lines, or even venturing across the globe. The BMW R 1200 GS undoubtedly influenced the adventure touring revolution. It's the bike that started it all.

We make a full line of protection parts to give this off-road machine the dirt therapy it deserves. There's a reason that the AltRider crash bars have rave reviews – they work well. Made from 1" of stainless steel, they are the only bars that wrap around the valve cover – providing the most protection.



**SIDE STAND FOOT**

Prevent sinking in soft ground



**REAR BRAKE MASTER CYLINDER GUARD**

Larger protection for your brakes



**POTENTIOMETER GUARD**

Guard the Achilles Heel of the R 1200 GS



**REAR BRAKE RESERVOIR GUARD**

Protect the lifeblood of your braking system



**MASTER/MACHINE**

BMW R 1200 GS







# ENDURO / INSPIRED

BMW F 800 GS / F 700 / F 650 GS



F 800 GS / F 700 GS / F 650 GS TWIN



**BULLETPROOF PROTECTION**  
Protect your lights with the lexan or stainless steel headlight guard held securely by Dzus fasteners for quick removal and cleaning.

## LEAN MEAN RIDING MACHINE

Take the path less traveled with the smaller, more off-road inclined GS. The younger brother in the GS series proves itself just as superior in all facets of adventure riding. Do you dare take the trodden path or stick to the one less traveled? You decide.

Whether you're riding for adventure or commuting to work, AltRider's got the goods to keep your bike in tip-top shape. The skid plate for the F 800 GS is one of our most visually stunning pieces, with excellent front header protection and the AltRider-original corrugated design. We sweat the small stuff, from the louvered edges on the radiator guard to the 3D tread on the side stand foot to the routered edges on the luggage rack.



**CRASH BARS**  
Rugged protection for rugged rides  
UPPER CRASH BARS AVAILABLE



**SKID PLATE**  
Shield your oil filter, heat exchanger, and header pipe



**LUGGAGE RACK**  
Strong rack for a smart pack



**HEADLIGHT GUARD**  
Safeguard the expensive headlight assembly in style



**RADIATOR GUARD**  
Serious protection of the vulnerable radiator



**SIDE STAND FOOT**  
Support your bike



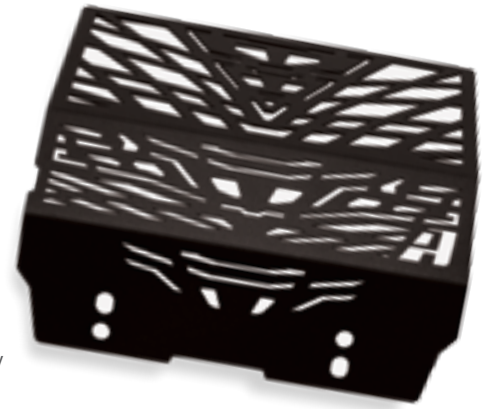
**VOLTAGE REGULATOR GUARD**  
Keep your power constant



**REAR BRAKE RESERVOIR GUARD**  
Tamper-proof your reservoir



“ I got into a losing argument with a highway guardrail. The cover (and a good deal of the bike) was destroyed. But, there wasn't a scratch on the water pump. / Jerry W.



**CYLINDER HEAD GUARD//  
DEFLECT DANGERS**

Rocks and debris kicked up by your front tire may hurt your cylinder head, valve cover and exposed ignition coil. The cylinder head guard protects against dangers while keeping your motor running cool with functional louvers.

\*Fits the Ducati Hyperstrada

**STYLE FOR  
YOUR STEED**

Hugs every tight turn with superbike power. Departs onto the unpaved with ease. 1200cc's of unadulterated bliss. Adventure touring intersects with passion as every man's carnal desires are fulfilled in Ducati's answer to an adventure motorcycle. It's won at Pikes Peak and has taken the Marley brothers to South Africa, all with AltRider protection.

Whatever your intent may be with this Italian steed, consider protection that acts the part while complementing the sexy styling. Because of high demand, the AltRider design team has also redesigned a few parts to fit another bike of the Strada family – the Ducati Hyperstrada. The Hyperstrada now fits the AltRider oil cooler guard, side stand foot, water pump guard and the luggage rack.



**CRASH BARS**  
Wrap your fairing, radiator and water pump in protection



**HEADER GUARD**  
Deflect rocks and debris away from your header



**LUGGAGE RACK**  
Take the necessities  
\*Fits the Ducati Hyperstrada



**RADIATOR GUARD**  
Practical design protects the vulnerable radiator



**OIL COOLER GUARD**  
Guard against dangerous debris



**FRAME SLIDERS**  
Let your sliders take the fall



**SIDE STAND FOOT**  
Sometimes you need a larger footprint  
\*Fits the Ducati Hyperstrada



**WATER PUMP GUARD**  
Takes the impact instead of your water pump  
\*Fits the Ducati Hyperstrada



David Alexanian, director of Long Way Round and Long Way Down, and the Marley brothers embarked on a journey through South Africa with their Multistrada's equipped with AltRider parts for the tv show, Marley African Road Trip.



Photo By Peter Lunstrum





# RUGGED/ BUT REFINED

TRIUMPH TIGER 800 / 800XC / EXPLORER 1200



“Great lower protection. I have bashed and scraped my skid plate many times over rocky terrain and it has held up very well.”

/ Michael



## FOR TRIUMPH EXPLORER 1200



**CRASH BARS 1200**  
Rugged protection for rugged rides



**LUGGAGE RACK 1200**  
Take the necessities, whether it is a little or a lot

## YOUR WILDEST RIDE

The Triumph Tiger Explorer 1200 is a powerful addition to the fully sized ADV bike clan with superior handling and off-road capability that begs to be protected with the best accessories. The Explorer made waves as the more strapping version of the gloriously obedient Triumph Tiger. AltRider took the challenge of creating new,

innovative designs for the brand new 1215 cc Adventure Tourer. A cutting edge feature of the AltRider crash bars is the hidden 4.75 inch hidden stash box encapsulated by a gorgeous billet anodized aluminum cap with sealed O rings for a completely waterproof seal. A skid plate, side stand foot and more will be released in 2014.

## FOR TRIUMPH TIGER 800 / 800 XC



**CRASH BARS**  
Rugged protection for rugged rides



**SKID PLATE**  
Well designed to protect against rocks and ruts



**LUGGAGE RACK**  
Carry a lot or a little with a variety of ways to tie down



**RADIATOR GUARD**  
Protection from rocks and road debris



**SIDE STAND FOOT**  
The ultimate side stand foot made of superior materials



“+1 On the AltRider Bars. Been “tested” twice, all with hardly a mark to the plastics. They just plain work. / Mike G.



**REPLACE YOUR BACKSEAT WITH LUGGAGE CAPACITY**

In response to your requests, AltRider designed the pillion rack for the Tenere. This rack fits into place like the pillion seat using the same key and features various plug and play options with the RotopaX, RAM and Givi.



**NOTHING LESS THAN THE BEST**

Forget the traditional. Dismiss the ordinary. And embrace your calling to explore the world’s greatest trails and roads meant to be traveled on a tenacious bike such as this. Originally inspired by previous rally bikes made by Yamaha, its roots are embedded with adventure, aptly named after the Ténéré desert in the Sahara.

Getting your Tenere outfitted will be crucial as you won’t be able to help but rip up any rugged terrain with this meant-for-everything riding machine. With one of the most well designed crash bars (resembling a bionic rib cage), there’s no part left exposed – it fully protects the fairing, engine and radiator.



**CRASH BARS**

Stainless steel construction means strength and rust-free bars



**SKID PLATE**

Rocks and debris don’t stand a chance



**LUGGAGE RACK**

Configurable in lower and upper configuration  
PILLION RACK AVAILABLE



**EXHAUST HEAD SHIELD**

Protect your boots and pants with this guard



**REAR BRAKE MASTER CYLINDER GUARD**

Protect the reservoir hose and brake line



**UNIVERSAL JOINT GUARD**

Prevent your pants from getting caught



**SIDE STAND FOOT**

Prevent sinking in soft ground



**SIDE STAND SWITCH GUARD**

Stop and go when you want to with this well designed piece



ADVENTURE / ALERT

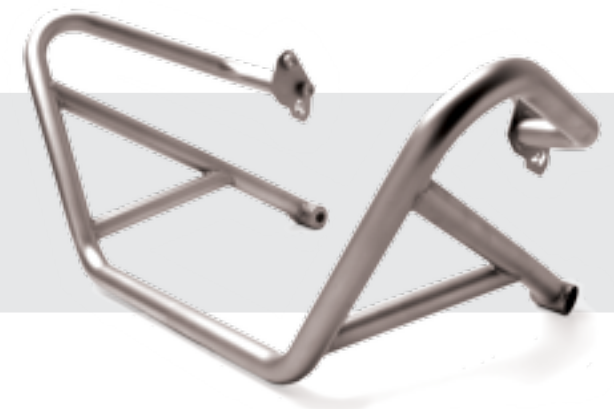
YAMAHA SUPER TENERE XT 1200Z





# ALL HAIL THE STROM

SUZUKI V-STROM 1000 / 650



**PRECISE ENGINEERING**

AltRider's 1" stainless steel crash bars provide the ultimate protection to your engine casing and plastics. Featuring a beautiful shot peen finish that resists rust and corrosion – even after they've been scratched.

**SUBTLY SAVAGE**

The Wee Strom 650 and V-Strom 1000 give a great ride without a big attitude. There is a reason the Strom fan base is so devoted. This bike stands up to the test and handles off-road with the best of them. We have done some testing on our own – taking ours to the limits everywhere from high speed riding in the dunes near Death Valley to slick mud trails in the rainforests of Washington.

Make it a true off-road machine with AltRider protection pieces. AltRider's robust skid plate integrates into the 1" stainless steel crash bars creating a whole protection system for the undercarriage of your bike. The skid plate's performance is upped by the stout rear bracket, which further strengthens the assembly.

*As good as it gets...The crash bars are everything I had hoped for. Installation is as easy as they say with the written instructions and the install video... / William*



**CRASH BARS**

Stainless steel robs for the heart of your bike



**SKID PLATE / 1000**

Protect vital engine cases and sump



**SKID PLATE / 650**

Shield the engine cases and oil sump with sturdy protection



**FRAME SLIDERS**

Keep your fairing safe in slides and spills



**SIDE STAND FOOT / 1000**

Give your bike a bigger footprint



**SIDE STAND FOOT / 650**

A larger footprint for your bike



**LUGGAGE RACK / 650**

New for 2014—for on or off road rides



**SIX CYLINDER ESCAPE**

The BMW K 1600 GT/GTL unveiled with a flourish, quickly becoming a leader in its class with advanced mechanics and sleek BMW styling. This strictly touring bike has the roar that commands attention, with a demure and polish that the BMW achieves so well.

While we usually equip ADV bikes for the off-road, the K 1600 caught our attention when dealers requested a solution for stationary drops, due to

the top-heavy weight of this 800lb bike. Nothing hurts your pride (and your wallet) as much as a totaled engine from a quick drop in the parking lot! Taking on the challenge, we constructed an engine protection bar made of 1" stainless steel tubing that allows the bike to sit at a higher resting angle than the OEM bars. This means that the bar will stop the bike from rolling over further and making it manageable for a single rider to lift the bike.



**ENGINE PROTECTION BARS**

Upright your bike at a higher resting angle



**EXHAUST PUCK**

Polymer pucks to absorb impact, saves your muffler from expensive damage



**SIDE STAND FOOT**

Keep your bike upright on hot pavement or gravel



**BRIGHT CONFIGURATION**

With the modified fairing integrated light, AltRider has updated the bar design to accommodate the 2013 change. Engine protection bars are still available for the 2011-2012 models with the integrated light mounting system.



**SINGLE CYLINDER WONDER**

Capable of handling just about any terrain, the light and agile BMW G 650 GS is a bike built for functionality and extreme adventures. With impressive gas mileage and a low weight, this bike easily becomes your favorite nimble adventure bike. Tackling new frontiers is a cinch with AltRider accessories protecting the bike's vital components.

AltRider's clever design allows access to the tailbox without removing the luggage rack. Made of 3/16 inch thick anodized aluminum, the rack incorporates side flanges for extra strength and rigidity.



**CRASH BARS**

Protect your clutch cover, radiator and front fairings



**SKID PLATE**

Incorporates 4 flanges to create a stronger plate



**LUGGAGE RACK**

Get access to your tailbox without removing rack



**REAR BRAKE RESERVOIR GUARD**

Protects the lifeblood of your rear braking system



**REAR BRAKE MASTER CYLINDER GUARD**

Protection to keep your brakes in top condition



**SIDE STAND FOOT**

Keep your bike upright on long adventures or short trips







**OFF-ROAD READY**

The Husqvarna TR 650 Terra and Strada give homage to Husky's dirtbike roots with a full-sized on and off-road bike – giving you the best of both worlds. Light and nimble off-road with a punch of power on the pavement, this bike screams for adventure. Tackle those wicked routes with AltRider's line of protection parts.

Adventurous rides are fun, but without proper protection, they pose a threat to the vitals of your bike. The AltRider crash bars give comprehensive protection to your radiator, fairings, and tank along with keeping the bike elevated in a crash. The bar integrates directly into the strongest mounting point on the bike, providing clearance for the riders knees with no exposed fasteners.



**CRASH BARS**

Safeguard the radiator, fairings and tanks with these stoutly mounted bars



**SKID PLATE**

Sump protection that features an oil drain hole for easy access



**LUGGAGE RACK**

Prolong your adventures with the right pack



**REAR BRAKE MASTER CYLINDER GUARD**

Protection to keep your brakes in top condition



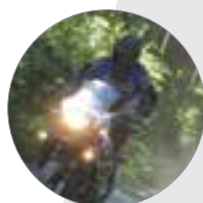
**REAR BRAKE RESERVOIR GUARD**

A savior to your rear braking system



**VOLTAGE REGULATOR GUARD**

Louvered to direct air toward the heat sink



*“Great products, great people, and they put on great events. I'd fly across the country to go on one of their rides, they are that much fun.”*

**/ Frank Emmanuel DeBros**

**ALTRIDER EUROPE STANDS STRONG**

**NOW SHIPPING ALL THROUGHOUT EUROPE**

The word about our products has spread...countless requests from adventure riders around the world spawned a new beginning for AltRider in Europe! With headquarters in the Netherlands, AltRider Europe has all AltRider products available on [www.altrider.eu](http://www.altrider.eu) with Euro pricing and the availability to ship throughout Europe.

Not only are we providing trusted parts, but we also plan to reach more riding communities outside the U.S. by planning an AltRider event with the same aspiration of adventure.





# THE EVOLUTION / CONTINUES

Just as time marches on, so does making new products and perfecting our existing products. We strive for perfection in all of our developments, examining every last detail – to the refined finishes, precision fitment and easy installation instructions.

In store for 2014 are new products for Honda NC 700 X, KTM 1190 Adventure R, BMW F 800 GS Adventure, Ducati Hyperstrada and more.

Create an account on [AltRider.com](http://AltRider.com) and personalize it to receive updates about parts for specific bikes. Be the first to know about our latest developments on products and ADV rides by joining our Facebook page at [www.facebook.com/altrider](http://www.facebook.com/altrider).

# THE PERFECT / PACK

## LASTING LUGGAGE FOR RUGGED ADVENTURES

Enjoy your two-wheeled thrills on or off-road and travel farther fearlessly without worrying how you're going to pack for your adventures. Per AltRider's philosophy to designing products, function meets innovation in our new venture, AltRider soft luggage line. Featuring tank bags and saddlebags, AltRider's approach to luggage will help you pack and travel more efficiently.

We took great care in every detail in order to make the best soft luggage—from the waterproof materials, cam lock buckles for secure attachment and everything down to the thread (military grade thread, if you were wondering). Our soft luggage line has been designed with the intention of making sure it lasts through all your adventures, whether that is thousands of miles off-road or an everyday commute to work.

## THE EVOLUTION OF SOFT LUGGAGE

Dave Wachs, original founder of Giant Loop, has joined AltRider to create a new line of innovative soft luggage. With his decades of experience in textile design, Dave incorporates cutting edge production techniques with a strong background in adventure riding to deliver high performance luggage pieces. Coming Spring 2014.





# TRAIL-TESTED GOODS

## ROX RISERS /

### Rise above to Ride above

The most important thing you can do in order to ride confidently on and off-road is setting up your bike specifically for you. One of the best ways to accomplish this is to install these innovative handlebar risers to your setup. Not only do they lift the bars up a few inches but they're adjustable to slide forward and back—achieving the perfect angle for your riding style. Now available is the pivoting Rox Risers for the new BMW R 1200 GS Watercooled.



**NOW AVAILABLE FOR THE  
BMW R 1200 GS WATERCOOLED**

“Installed a set of 2” Rox Risers on my '12 GSA. What a difference it made. Much more comfortable seated and I can now stand without being bent over at the waist. I should have done this a long time ago.” / **Mb289 on advrider**

## PROXXON /

### Our favorite tool set...ever

Built with exceptional quality in Germany, Proxxon hand tools are the perfect addition to any garage. At every rally and event we attend, you'll see us exclusively using Proxxon for installing all AltRider hard parts – they're just that good. Our favorite is the professional-use Torque Wrench which includes an easy-to-read scale for precision adjustments and a reversible ratchet lever. Proxxon Tools are exclusively sold in the U.S. through [Altrider.com](http://Altrider.com) and sold separately or as kits.



“Great tool set. Honestly from turning wrenches for 15 yrs., this is one of the better all-in-one kits, and a very good value. There is no perfect one size fits all solution, but this is pretty damn good. / **Jeremy**



## ROTOPAX FUEL CELLS /

### Fuel To Go

While others bail out on a ride early to look for fuel, you can travel further fearlessly with this ultra-durable rotationally molded fuel cell. Complete with a sure-seal gasket, it's guaranteed to never leak, even fighting natural vibrations that may loosen the cap. All you need is two drilled holes to easily utilize the RotopaX mounts. AltRider Luggage Racks come pre-drilled for a quick installation of all RotopaX items. Water cell and a storage box are also available.







### TECH SPEC / Get A Grip

If you've trained at any off-road riding schools, the instructors will tell you to tuck your knees into the tank for overall body control. Gain better traction with TechSpec's Gripster Tank Grips for less fatigue off-road and an enhanced ride. Easily install these pre-cut strips of grip that feature a releasable adhesive. Choose from 3 different grip materials: Snake Skin, C3 and High Fusion.



“ Been using this since day one on my Super Tenere. Great product that certainly helps with controlling the bike in a variety of situations. Highly recommended addition!!

/ Phil Challinor



### HELMET LOK / Secure Your Helmet

Avoid having to carry your helmet around or risking it getting stolen by locking your helmet to your bike with Helmet Lok. This carabineer-style combination lock has the functionality to be locked on different parts of the bike. Use the D-Ring or chinbar to lock your helmet onto your bike, giving you freedom to roam around without the baggage of a helmet.

### PDM 60 / Amp Up Your ADV Machine

Most modern motorcycles incorporate canbus technology, which will detect aftermarket electronics, and then oftentimes shut those circuits down. With the PDM 60, you can power and manage your aftermarket electronics without draining your battery or buying extra fuses. This revolutionary module features six independent, programmable circuits and 60 amps of power-handling capability. Finally, power management made simple.



# PROVEN PARTS

### SCOTTOILER / Maintain Your Chain

Chain maintenance is commonly neglected, shortening the life of your motorcycle chain and sprocket. Take the mess out of oiling the chain with Scottoiler's eSystem, an automatic and universal electronic oiler. This system installs easily on your bike to provide hassle-free chain lubrication. Get your chain oiler kits and Scottoil bottles for various bikes on alrider.com.







# ACCESSIBLE/ ADVENTURE

By AltRider

Want to get lost in a good adventure? We can show you the way. For riders in search of fresh experiences, consider taking a weekend out of your busy schedule to be swept away in one of our three signature events. Got a dualsport or ADV bike? Riding and camping gear? Then you're all set for a three day adventure ride that includes: amazing GPS-led routes for riders of all levels, delicious regional fare, a training seminar, adult beverages, nightly entertainment, and amazing prizes.



Together with Jimmy Lewis, one of the only Americans to ever podium finish at Dakar, we created daring routes in his Dakar training grounds near Death Valley. Sand dunes, mountainous desert paths, miles of cracked riverbeds, arid terrain – an unforgettable rugged off-road ride is guaranteed. While most of us won't ever race Dakar, we encourage you to feed your wanderlust for an uninhibited experience.

# TASTE OF DAKAR/

February 2014

Las Vegas

NEVADA



# HOH RAINFOREST/ RIDE/

August 2014

Olympic  
Peninsula

WASHINGTON

One of the few rainforest in the lower 48 states, the Hoh Rainforest is a beauty to behold... on two wheels. The riding isn't the only thing that is amazing – the scenery is epic with waterfalls, mountain vistas, and the forest's lush foliage. This ride is near and dear to our hearts because it's one of our favorite local riding spots. Feast on Pacific Northwest oysters and Native American cuisine, meet some new riding friends and enjoy the special routes that change year to year.

# CONSERVE/ THE RIDE/

June 2014

Woodward  
Caves

PENNSYLVANIA

Escape into a landscape that is an east coast wonderland of hidden treasures. Within the wooded forests of Pennsylvania, experience the best of mud, rock, and dirt riding in a twist of trails. We team up with nonprofit organization Seven Mountains Conservation Corp (SMCC), fueling the fight to keep off-road trails open for public use. Ride for a cause and join us on this undertaking to keep us ADV riders where we belong: off-road.





“ I choose AltRider because I absolutely abused it  
and it can take the abuse! / Will S.



**A**  
**ALTRIDER**  
venture on

206.922.3618  
altrider.com

