



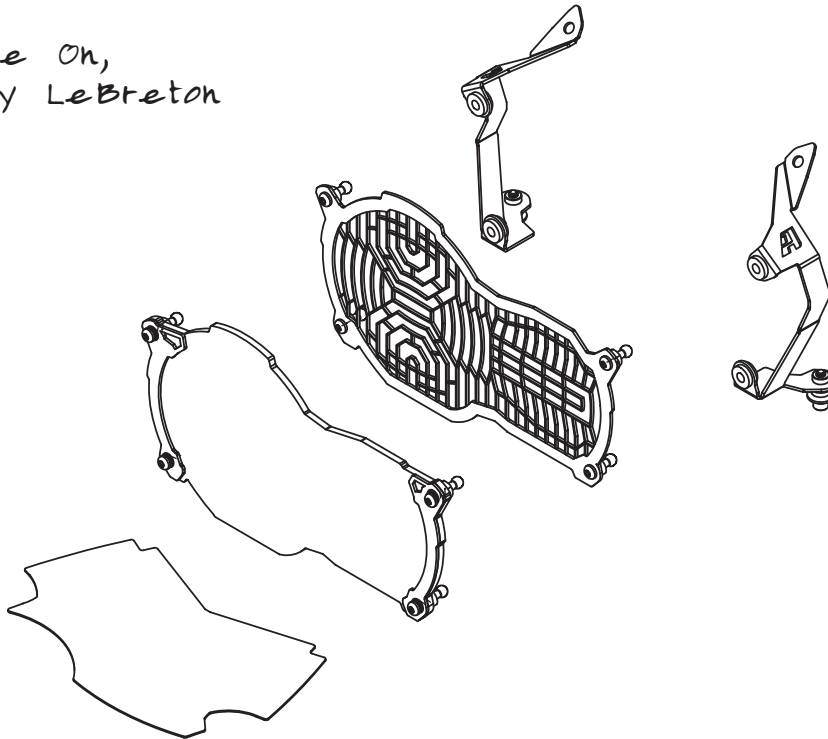
# AltRider Headlight Guard for BMW R 1200 GSW & Adventure INSTALLATION INSTRUCTIONS

The most up to date instructions can be downloaded from the product page at [altrider.com](http://altrider.com), under the instructions tab.

Dear Rider,  
Thank you for choosing AltRider! Whether a seasoned world adventurer or a first time ADV-Newbie, we welcome you to the AltRider experience. You can install your new product with the utmost confidence. AltRider designs, tests, and manufactures all of its products here in the United States. We are proud to do what we do, and honored to present to you the product of our labors.

Enjoy it, show it off, and most of all, RIDE IT!

Venture On,  
Jeremy LeBreton



**Headlight Guard for  
BMW R1200GS and Adventure  
Water Cooled**

## AltRider LLC

### Global

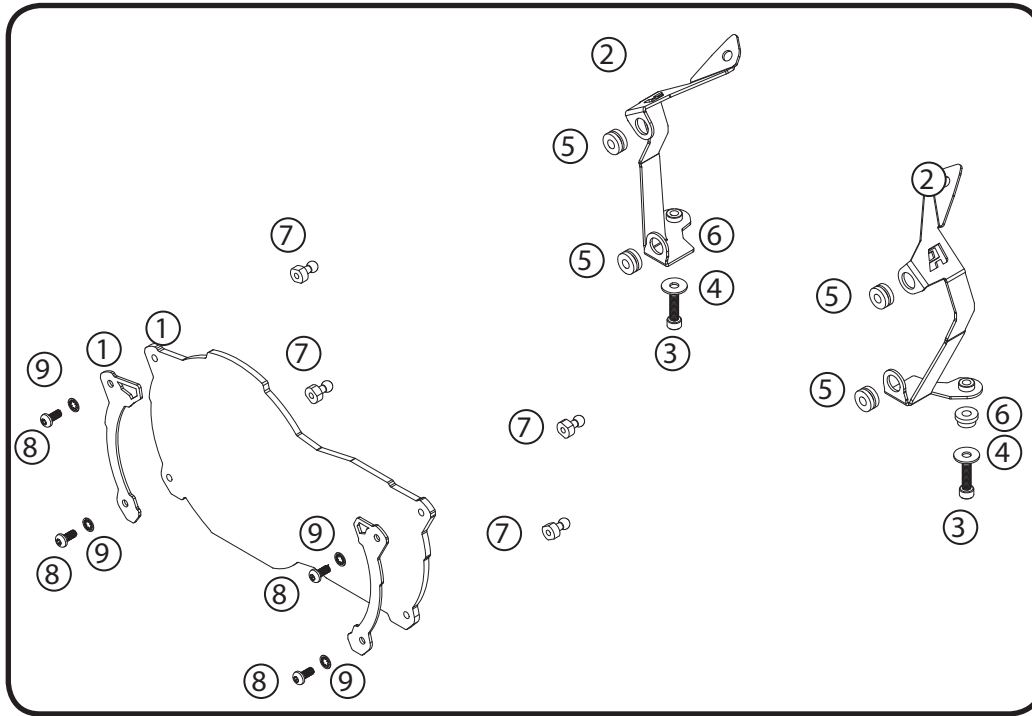
mailing: 4000 Aurora Ave N Ste 100  
Seattle, WA 98103 USA  
phone: 206-922-3618  
email: [info@altrider.com](mailto:info@altrider.com)  
web: [www.altrider.com](http://www.altrider.com)

### Europe

mailing: Heliumstraat 230  
2718 RS Zoetermeer  
The Netherlands  
email: [info@altrider.eu](mailto:info@altrider.eu)  
web: [www.altrider.eu](http://www.altrider.eu)

Rev 6.8  
MADE IN THE USA





## Kit:

- ① Headlight guard (Lexan or Stainless Steel) / and frame
- ② Headlight guard brackets
- ③ (2) M6 x 25 mm stainless cap head screw
- ④ (2) M6 stainless washer, OD of 18mm
- ⑤ (4) Rubber grommets
- ⑥ (2) Custom shoulder spacer
- ⑦ (4) Custom ball stud
- ⑧ (4) M5 stainless Torx screw (SS Guard: 6mm L; Lexan Guard: 10 mm L)
- ⑨ (4) M5 lockwashers (Lexan guard only)
- ⑩ Thread Locker



### Polycarbonate Headlight Guard Cleaning Instructions

Clean your headlight guard using ONLY mild soap and water, dry with a soft cloth. For particularly stubborn bug guts, remove and soak in water, or place a wet soft towel on the lenses and allow to soften the debris.

DO NOT USE OTHER CHEMICALS to clean your headlight guard, such as windex, rubbing alcohol, acetone, simple green, ammonia, bike wash etc.

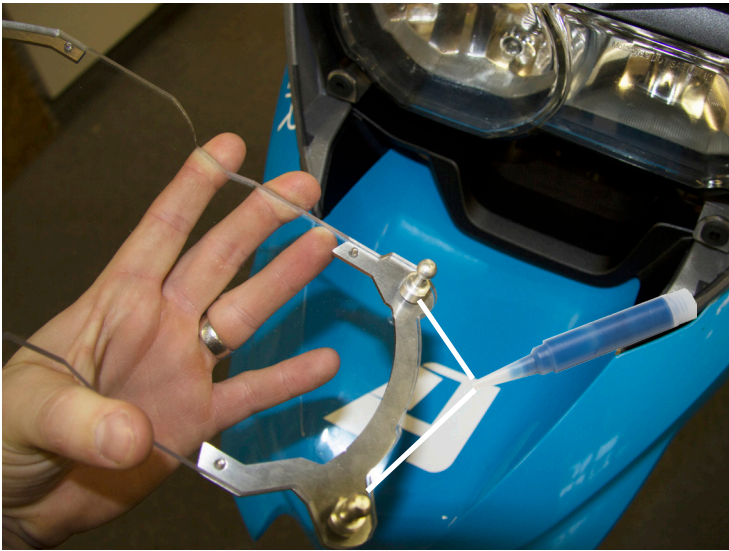
The polycarbonate plastic lenses are very tough and impact resistant, but will break down over time when exposed to harsh chemicals.



## Recommended tools:

- ① hardware tray
- ② 1/4" ratchet / 1/4" extension
- ③ T25 driver
- ④ M5 allen driver
- ⑤ 10 mm wrench

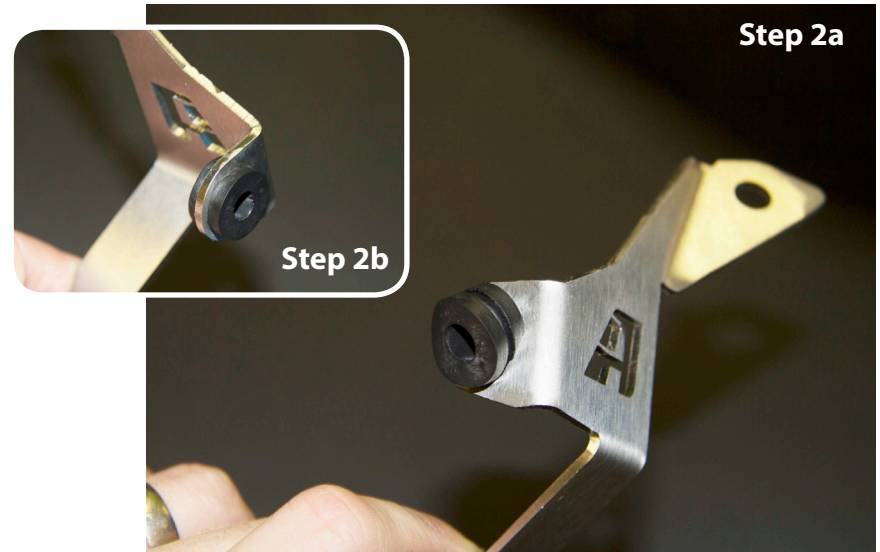




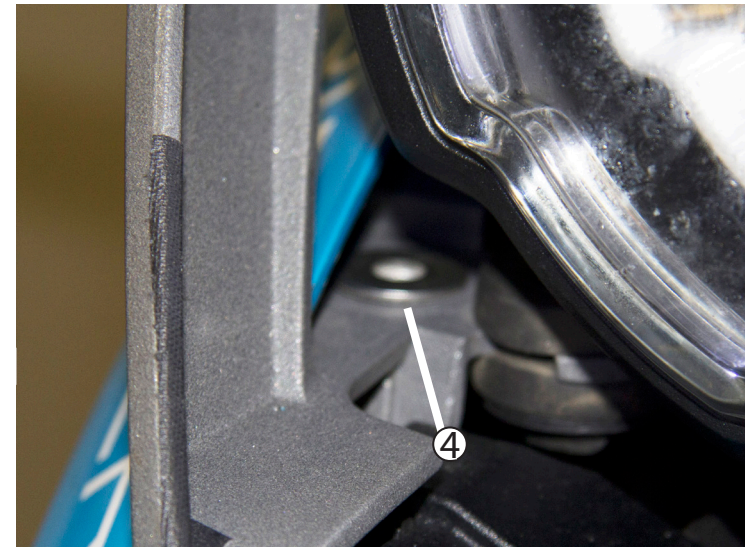
- ① Current headlight guards have ball studs pre-installed. If you have an older version, install ball studs + screws to headlight guard. Apply SMALL drop of loctite into each ball stud. Tighten with bare hands. Hold the ball stud stationary with a 10mm wrench and turn the torx screw 1/4 turn more. Careful, overtightening will crack the lexan.



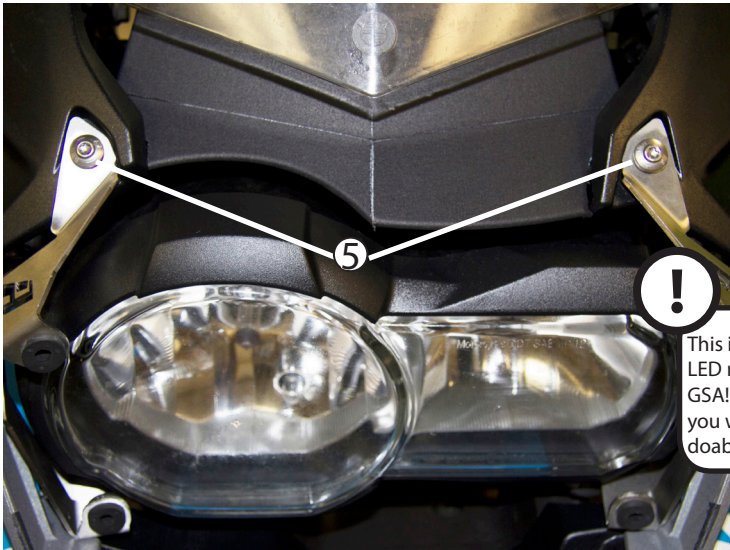
- ③ Adjust windscreen to its highest position. Remove the (2) OEM T25 fasteners and set aside. Be careful not to lose the small clear protective plastic behind the screw, you will need this later.



- ② Install the (4) rubber grommets on the right and left side brackets. Sometimes it is easier to get grommets in place if you use some water as lubrication. You can also gently press into place with a flat head screwdriver.



- ④ Drop in (2) hat spacers, one on each side into the hexagonal hole in the cast frame. The hole the spacers go in is directly behind the beak fairing. If you are working on a GS Adventure, you will have to flex the plastic out slightly to gain access to this area.



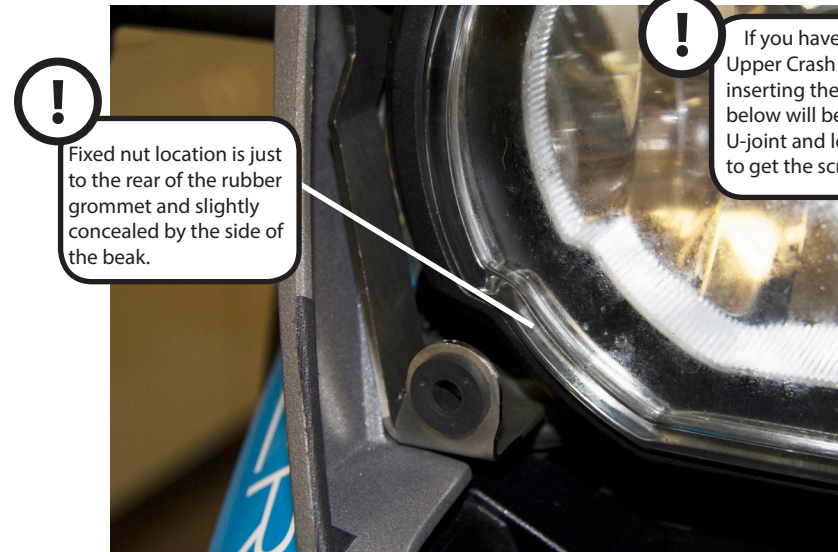
! This is a tight fit on the LED models and on the GSA! Take your time and you will find it is very doable.

- ⑤ Install brackets with small clear round protective plastic between bracket and fairing on top mounting position. Install the (2) OEM T25 fasteners a couple of turns, do not tighten all the way.



! DO NOT CLEAN LEXAN GUARD WITH ANY CHEMICAL CLEANERS! Only clean with hot soapy water. Chemical cleaners can break down the scratch resistant coating we treat the Lexan guards with.

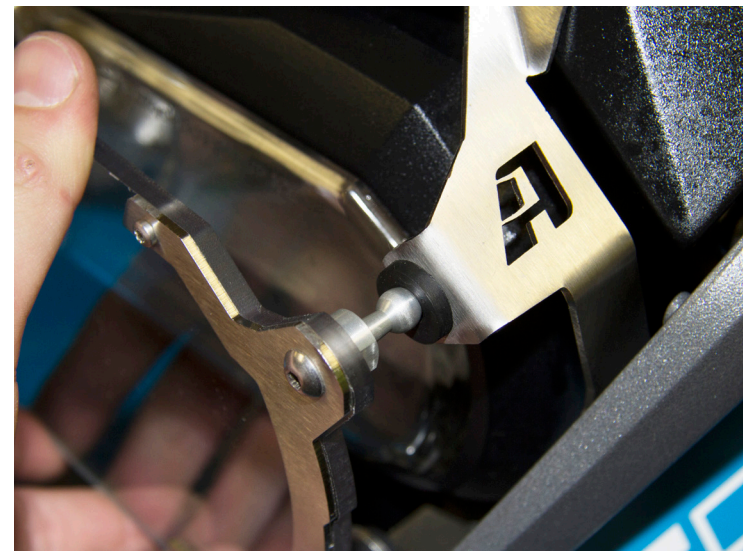
- ⑦ Tighten both OEM T25 fasteners all the way. Then tighten the cap head bolts from underneath with an M5 driver.



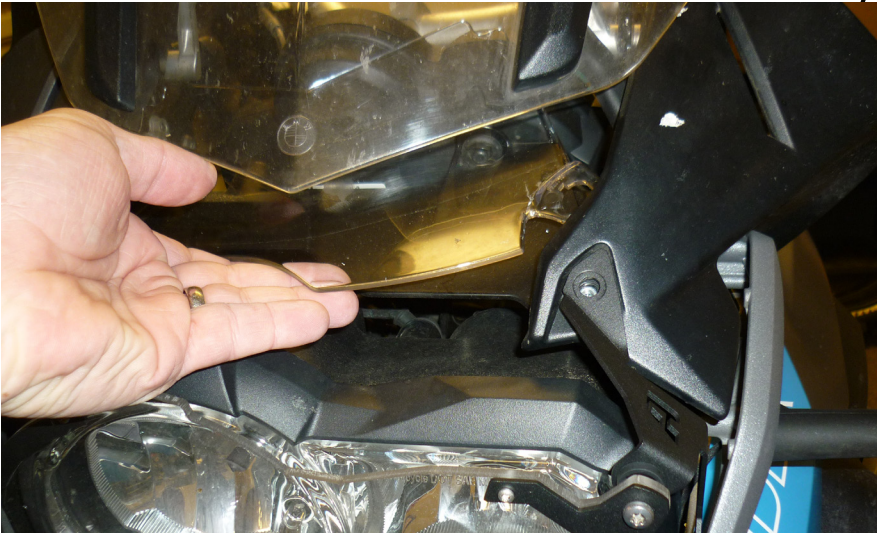
! Fixed nut location is just to the rear of the rubber grommet and slightly concealed by the side of the beak.

! If you have AltRider Upper Crash Bars installed, inserting the M6 bolt from below will be easier with a U-joint and long extension to get the screw started.

- ⑥ From underneath the beak, insert the cap head bolt with metal washer from the bottom up. The bracket contains a fixed nut that you will thread into. **Add a small drop of thread locker to the bolt before starting.**



- ⑧ Install the guard on to the brackets by pressing the ball studs into the rubber grommets on all four corners. Sometimes this is easier if you apply a small amount of water to each grommet as lubrication.



- ① Remove clear wind deflector by unscrewing the same two T25 torx that hold the headlight guard brackets on. Clean the wind deflector with warm soapy water. Dry. Keep your hands clean.



- ② Attach sticker starting with the center ridge. The sticker is larger than the deflector and there should be some overhang on the edges. Press into the crosswise bend. Use your finger to press into place, pulling on the sticker edge with your other hand as necessary.



- ③ Continue to work from the center outward with your thumb or fingers, pressing out bubbles to the edge while lifting with your other hand. It may be lifted and repositioned as necessary to get it to lay smoothly. Large bubbles can be carefully pricked with a sharp exacto knife and pressed flat.



- ④ An old credit card can be used to help smooth it out, but careful as the sticker will tear with too much abuse. Wrap the excess around the edges. Re-install on the bike.

## CONGRATULATIONS!

**You've completed your installation. If at any point you have questions about your installation or have any feed back for us, we'd love to hear it. A downloadable version of these instructions can be found at our web site. [www.AltRider.com](http://www.AltRider.com)**

**After 5 hours of riding, or 100 miles, check all the fasteners on the assembly to ensure they are tightened to spec.**

### Global Office:

**email: info@AltRider.com**  
**phone: +1 206-922-3618**  
**address: 4000 Aurora Ave N**  
**Ste 100**  
**Seattle, WA 98103**

### Europe Office:

**email: info@AltRider.eu**  
**address: Heliumstraat 230**  
**2718 RS Zoetermeer**  
**The Netherlands**

#### TERMS OF USE, WARRANTY AND LIABILITY WAIVER

AltRider LLC, a Washington company, having its principal place of business in Seattle, WA ("AltRider") offers its motorcycle accessories (the "Product") with the terms, conditions and notices as follows:

##### Terms of Use

This Product is offered to you conditioned upon your acceptance without modification of the terms, conditions, and notices contained herein. Installation and/or use of this product implies acceptance of all such terms, conditions, and notices. If you do not agree to these terms, do not buy the Product. If you have already bought the Product and do not agree to these terms, return this Product promptly including the packaging and all written materials, to AltRider.

##### Limitation of Liability and Warranty Disclaimer

You may return your merchandise for a full refund or exchange, less any original or return shipping fees under these conditions:

1. Only if the merchandise is in 100% factory condition. Original manufacturer's packaging and same condition as sold – original boxes, packaging material, instructions, documentation, parts, and attached tags.
2. Only unused, unscratched, uninstalled, undamaged merchandise will be accepted. Do not install equipment until you are sure you want to keep it. Package items carefully in protective materials before returning them. Never ship an item in its original manufacturers packaging – it will arrive damaged. Please use a postal box or other adequate packaging to ensure your return or exchange is not damaged on the way back to AltRider.com.

To read more about our exchanges and returns policy, on the web, navigate to <http://www.altrider.com/info/exchangesAndReturns>

Excepting the warranties stated in the preceding paragraph, AltRider hereby disclaims all other warranties and conditions with regard to the Product including all implied warranties and conditions of merchantability and fitness for a particular purpose. There are no warranties which extend beyond the description on the face hereof. AltRider does not warrant against damages or defects arising out of use or installation of the Product. Installation instructions are provided for your convenience. AltRider is not responsible for any damages arising out of the installation, improper or otherwise, of the Product. No warranty of any kind, expressed or implied, is made regarding the safety of this Product.

To the extent allowed by law, AltRider shall not be held liable for any direct, indirect, punitive, incidental, special or consequential damages arising out of, or connected with, the use or misuse of this Product. Buyer assumes all risks and liability arising from use of this Product.

##### Entire Agreement

This document states the entire obligation of AltRider with respect to the Product. If any part of this agreement is determined to be void, invalid, unenforceable or illegal, including, but not limited to the warranty disclaimers and liability limitations set forth above, then the remainder of the agreement shall remain in full force and effect.

##### Applicable Law

This agreement is governed by the laws of Washington, USA. You hereby consent to the exclusive jurisdiction and venue of the courts of Washington, USA, in all disputes arising out of or relating to the use of this product.

