



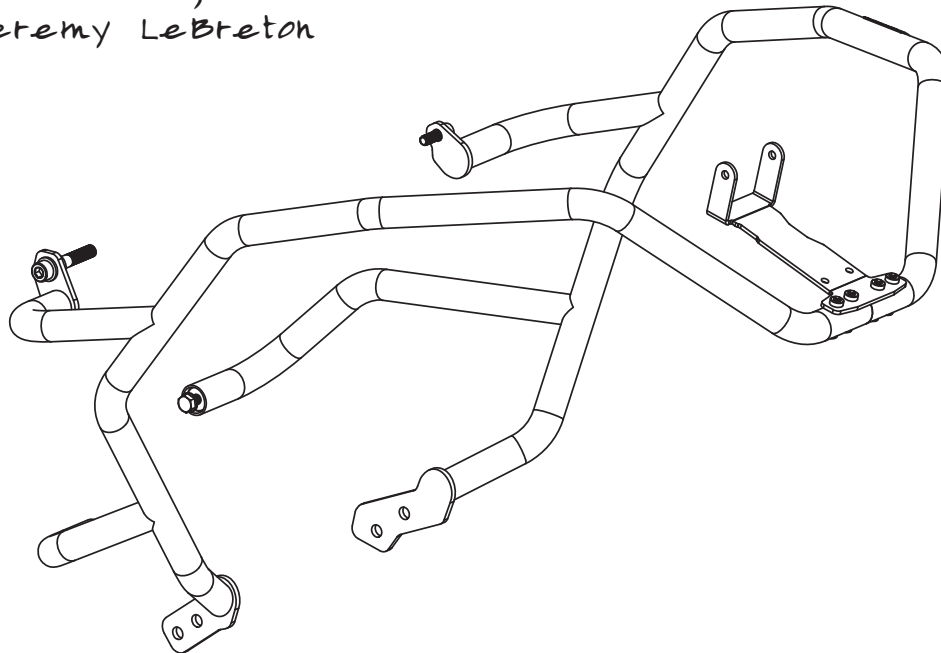
AlRider Crash Bars for BMW S 1000 XR INSTALLATION INSTRUCTIONS

The most up to date instructions can be downloaded from the product page at altrider.com, under the instructions tab.

Dear Rider,
Thank you for choosing AlRider! Whether a seasoned world adventurer or a first time ADV-Newbie, we welcome you to the AlRider experience. You can install your new product with the utmost confidence. AlRider designs, tests, and manufactures all of its products here in the United States. We are proud to do what we do, and honored to present to you the product of our labors.

Enjoy it, show it off, and most of all, RIDE IT!

Venture On,
Jeremy LeBreton



AlRider Crash Bars
BMW S 1000 XR

Package Contents:
- Crash Bars
- Hardware Kit
- Instructions

AlRider LLC

Global

mailing: 4000 Aurora Ave N Ste 100
Seattle, WA 98103 USA
phone: 206-922-3618
email: info@altrider.com
web: www.altrider.com

Europe

mailing: AlRider EU
Heliumstraat 230
2718 RS Zoetermeer
The Netherlands

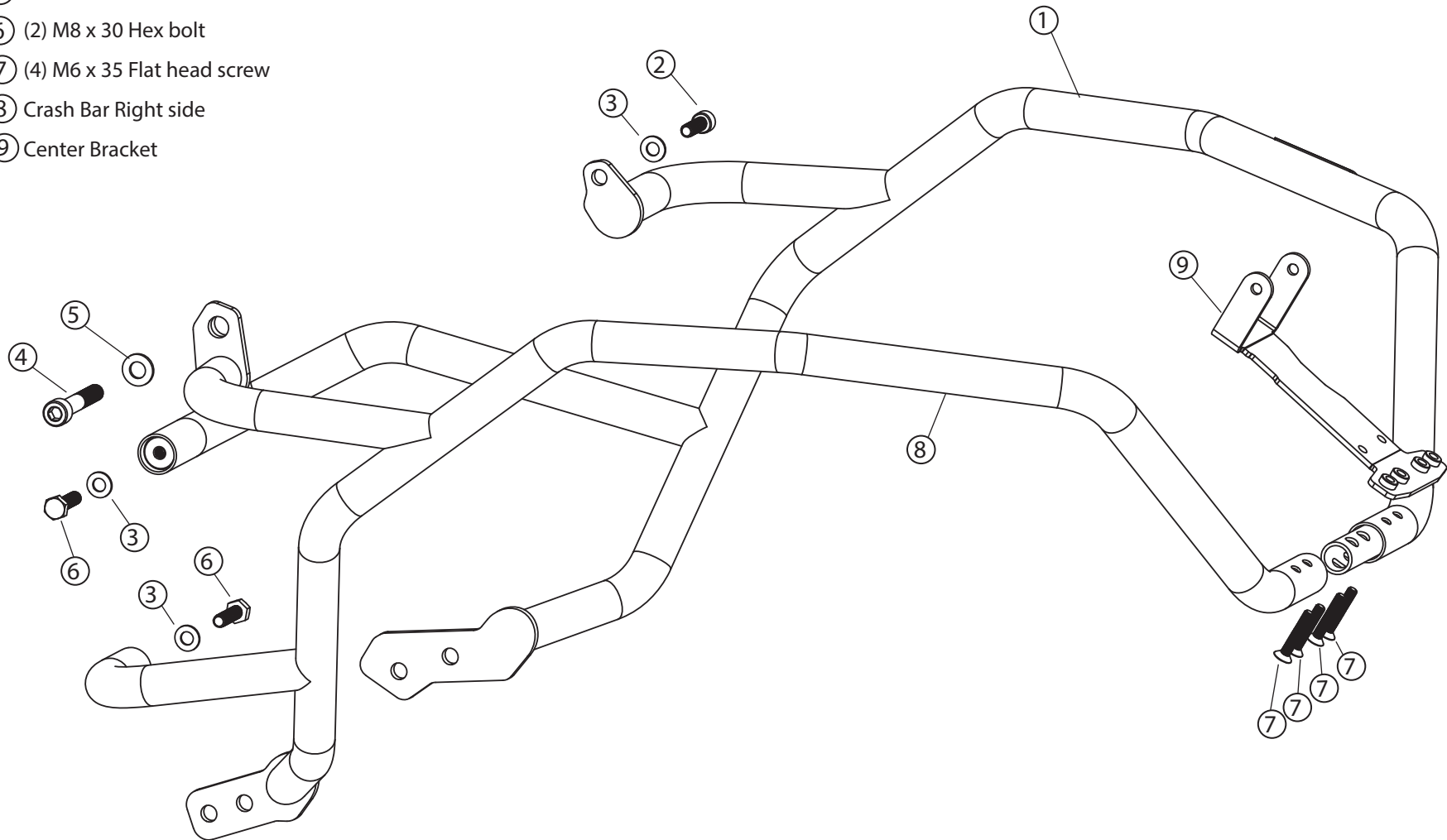
email: info@altrider.eu

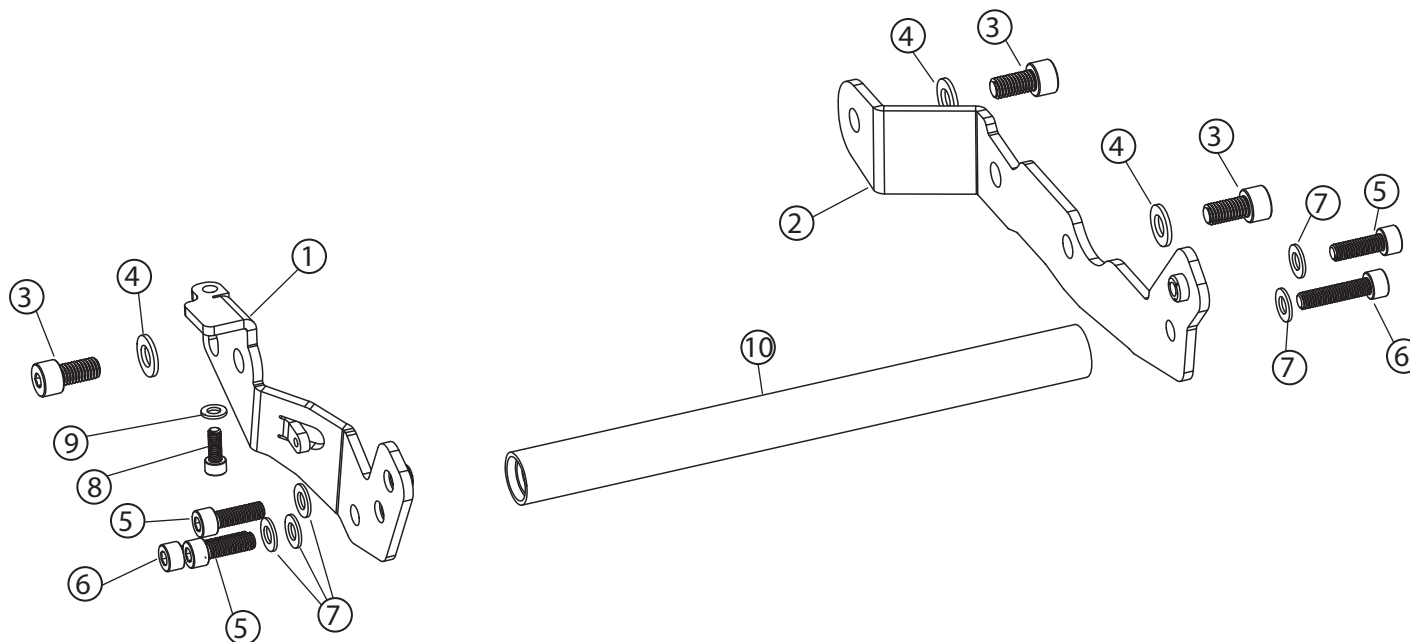
REV 2.0
MADE IN THE USA



Crash Bars Contents

- ① Crash Bar Left side
- ② M8 x 25 socket cap screw ss
- ③ (3) M8 washer
- ④ M10 x 60 socket cap screw ss
- ⑤ M10 Washer
- ⑥ (2) M8 x 30 Hex bolt
- ⑦ (4) M6 x 35 Flat head screw
- ⑧ Crash Bar Right side
- ⑨ Center Bracket



**Bracket Kit Contents**

- ① Bracket Right side
- ② Bracket Left side
- ③ (3) M10 x 20 socket cap screw
- ④ (3) M10 washer
- ⑤ (3) M8 x 25 socket cap screw
- ⑥ (2) M8 x 35 socket cap screw
- ⑦ (5) M8 washers ss
- ⑧ M6 x 16 socket cap screw
- ⑨ M6 washer ss
- ⑩ Cross tube

Recommended tools:

- ① Torque wrench
- ② Medium strength thread locker
- ③ 1/4" ratchet / 1/4" extension
- ④ 1/2" driver / 1/2" extension
- ⑤ T25 Torx
- ⑥ T30 Torx
- ⑦ T50 Torx
- ⑧ 4mm allen
- ⑨ 5mm allen
- ⑩ 6mm allen
- ⑪ 8mm allen
- ⑫ 13mm open end wrench



① **If you already have the AltRider S 1000 XR Skid Plate installed:**

A) Remove rear screws in skid plate that connect it to the brackets. The rear brackets can remain attached to the bike.

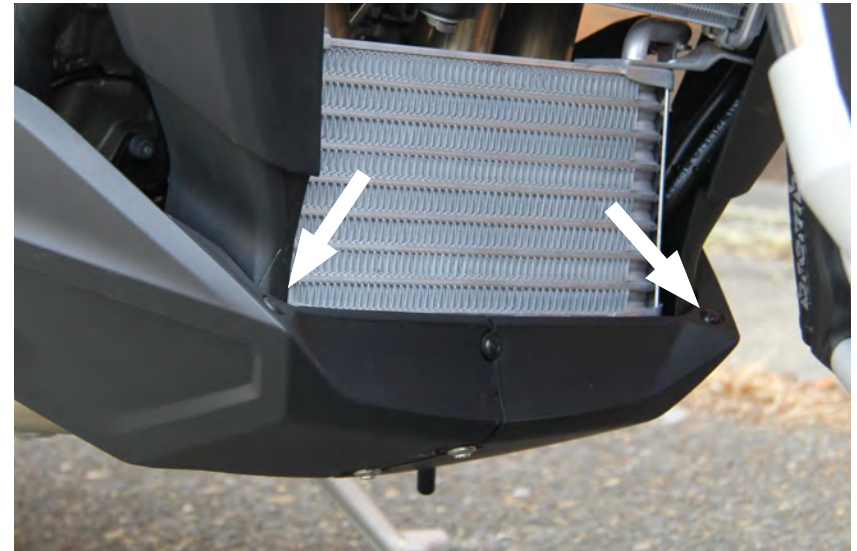
B) Remove the front screws that attach the skid to the small upright front brackets. Remove skid plate.

C) Remove the front left and right small skid brackets from the main mounting brackets /cross tube assembly. You will later install these stacked on to the the crash bar mount flanges.

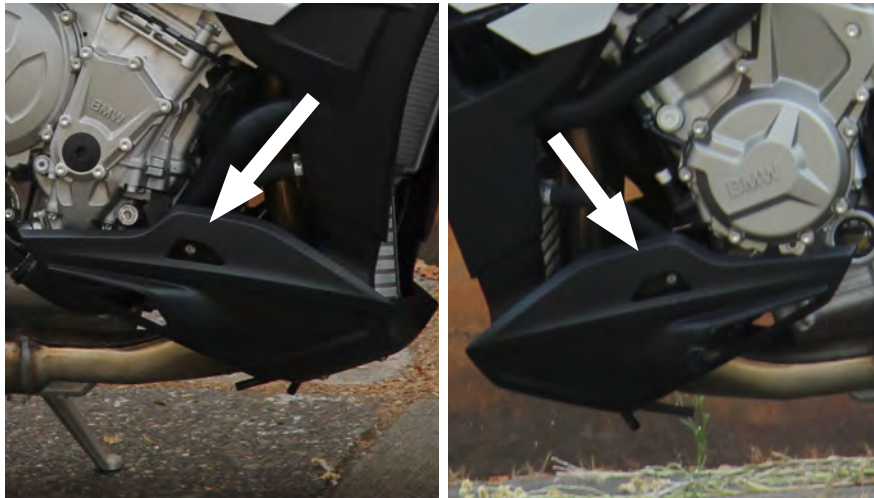
If you are installing the AltRider S 1000 XR Skid Plate at the same time as the crash bars:

A) Start with these instructions and install the crash bars first.

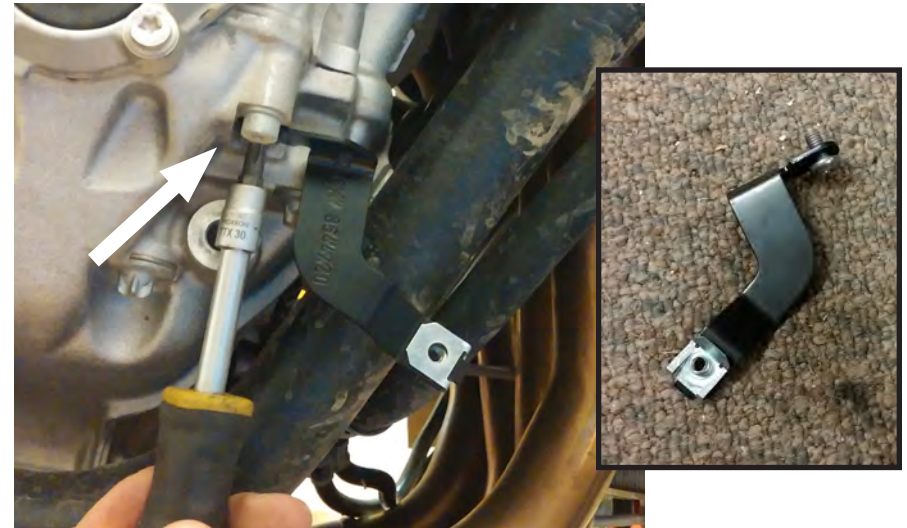
B) You will be prompted to pause and install the skid plate part way through.



- ② Remove plastic lower fairing. Start by detaching the small plastic rivet at each front corner. Push the small central pin inward. Caution! It will detach and spit out on the inside of the fairing, watch where it goes! Then pull the head of the plastic rivet outwards. Save these parts for re-assembly.



- ③ Use a T25 torx bit and remove the two screws (one right side, one left) that attach the lower fairing. Save these for reinstallation. Remove the fairing and locate small plastic pins from step 2. Save all for reinstallation.



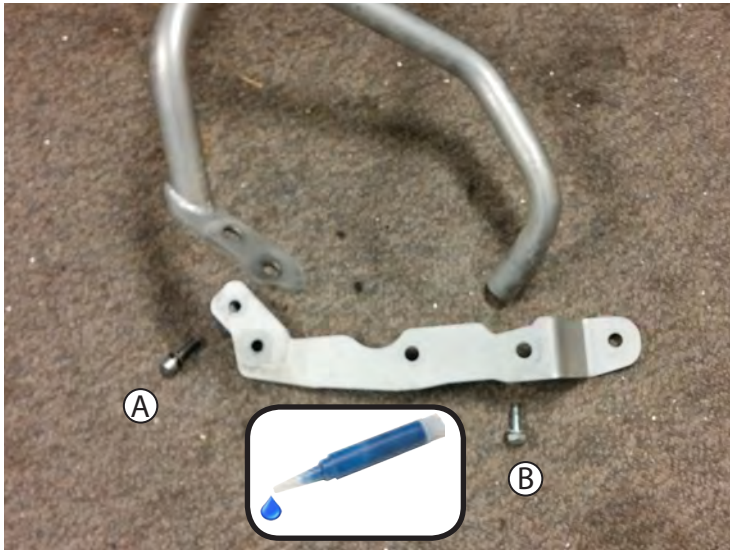
- ④ Remove the right side bracket that holds the fairing, use T30 torx. You will not reuse these parts.



- ⑤ Under the front of the bike, on each side of the headstock of the frame, use T30 Torx and remove the two (2) factory M6 screws as shown.



- ⑥ Install the front center under-nose brace. Re-use the factory torx M6 screws. Apply medium strength thread locker to the screws. Do not fully tighten yet.



- ⑦ Arrange left side crash bar and left side mounting bracket from bracket kit. Front screw is M8 x 25 socket cap screw with washer, (A). Rear is M8 x 30 hex cap with washer(B). Apply medium strength thread locker to each screw.



- ⑧ Attach the left side large lower bracket to the left side crash bars as shown. M8 socket head in front position, threaded into permanent nut. M8 hex cap in the rear, going from inside out through bracket and into threaded boss in end of crash bar. Leave screws loose so bracket can be repositioned as needed.



- ⑨ Attach the left side bars to the bike. Position with cross tube under nose, install one M8 x 25 stainless socket cap screw with washer to threaded hole in frame (A). Attach low bracket to threaded holes in bike with two M10 x 20 socket cap screws with washers(B). Leave loose for now. Apply medium strength thread locker to each screw.



- ⑩ Remove right side engine mount bolt as shown T50 torx tool required. Leave the two spacers in the frame. You will not re-use the bolt.



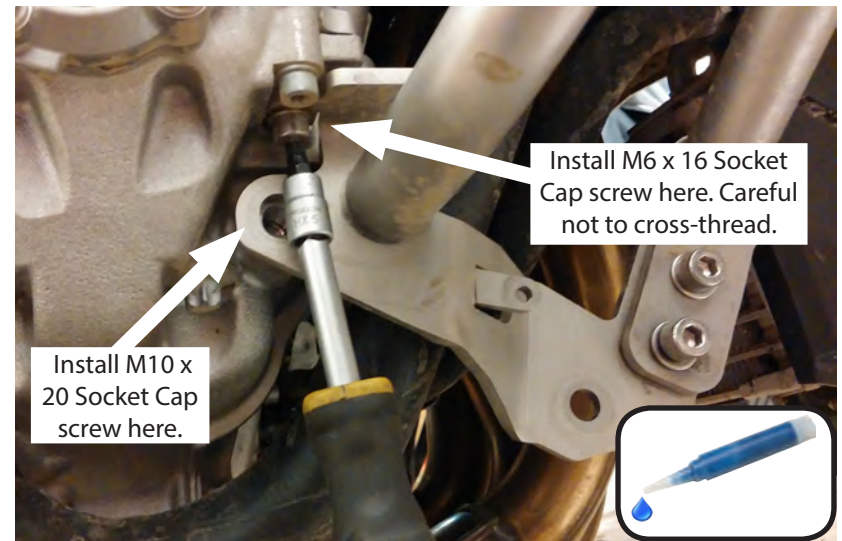
- ⑪ Arrange right side crash bar and right side mounting bracket from bracket kit. Front screws are two M8 x 25 socket cap screws with washers, (A). Rear is M8 x 30 hex cap with washer(B). Apply medium strength thread locker to each screw.



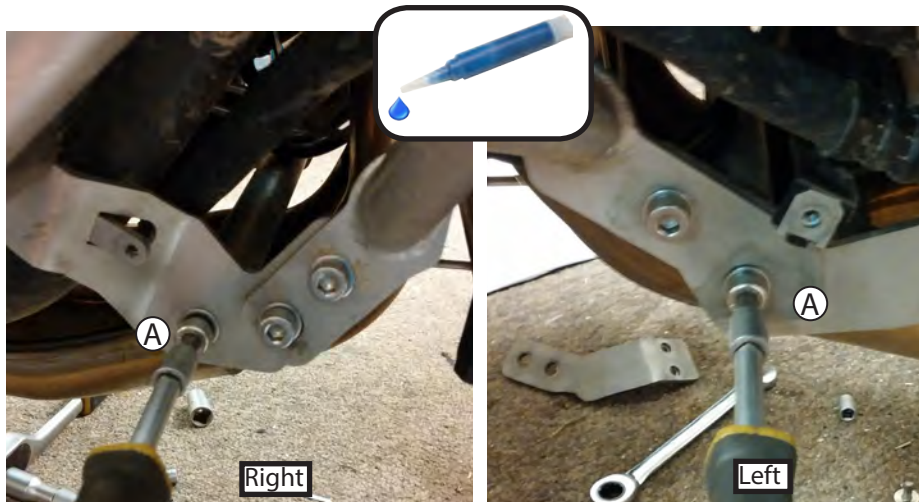
- ⑫ Attach the left side large lower bracket to the left side crash bars as shown. Two M8 socket head screws in front position, threaded into permanent nuts. M8 hex cap in the rear, going from inside out through bracket and into threaded boss in end of crash bar. Leave screws loose so bracket can be repositioned as needed.



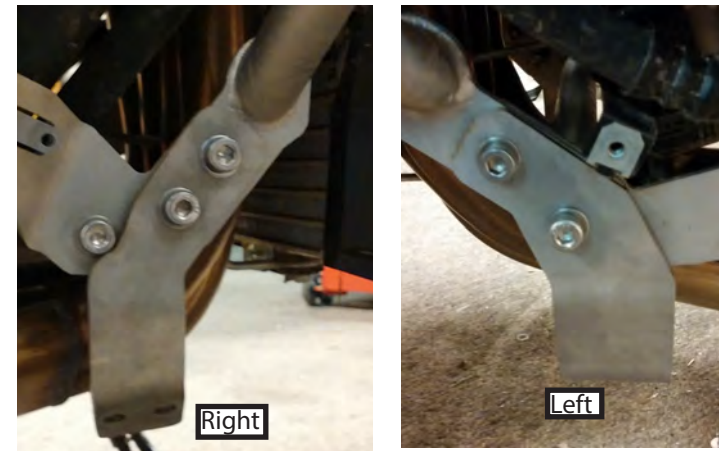
- ⑬ Attach right side bars to bike. Start by sliding the bars together under the nose. Insert new engine bolt M10 x 60 allen cap with washer and thread in loosely. Make sure round boss on crash bars is inserted into frame hole.



- ⑭ First install M6 screw with washer through lower bracket. Tighten to 5 N-m. Install M10 x 20 socket cap screw with washer (at location shown by arrow), leave loose for now. Apply thread locker to each screw.



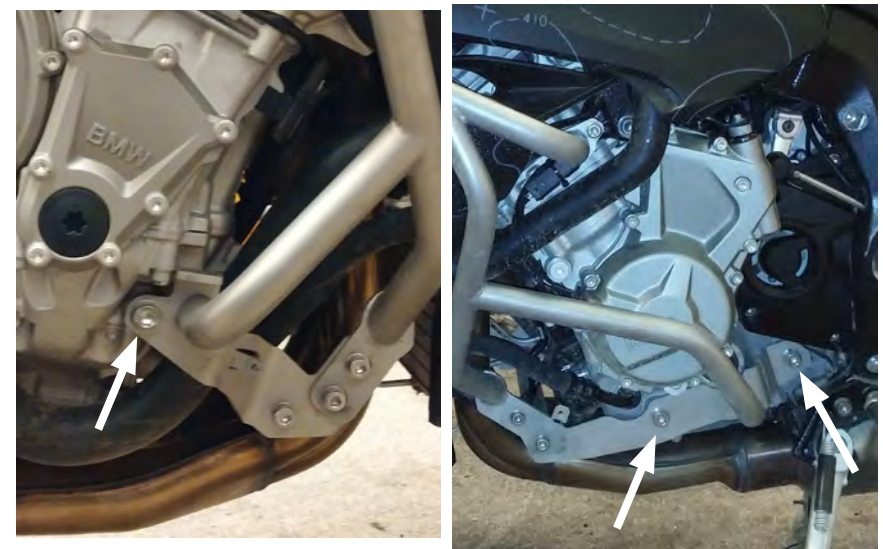
- ⑮ Install low bracket cross tube as shown. Apply thread locker to each screw. Each side uses one M8 x 35 socket cap screw. (A) Attach Loosely for now. **If you are also installing the AltRider Skid Plate**, first remove the M8 screws, and stack the skid plate front brackets on the outside of the crash bar flanges (see pics step 16). Reinstall all hardware.



- ⑯ Views with AltRider front Skid Plate brackets installed. If you are installing the AltRider Skid Plate, pause this installation and install the rear brackets for the skid per the skid plate instructions.



- ⑰ Use 4mm allen wrench, install (4) M6 x 35 flat head screws, attaching bars to center under nose bracket. Apply thread locker to each screw. Tighten to 3 N-m, careful not to strip. Tighten the left and right side 6mm torx screw (T30) on the front bracket to 8 N-m.



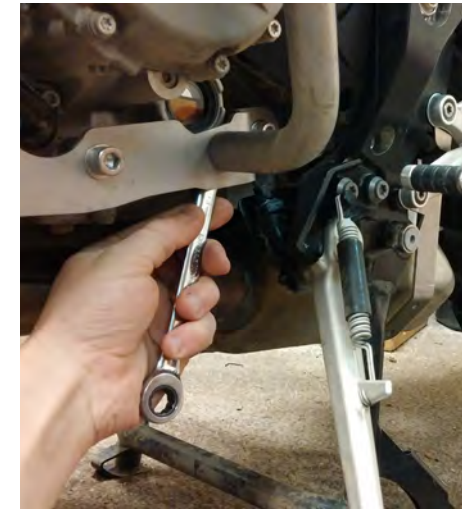
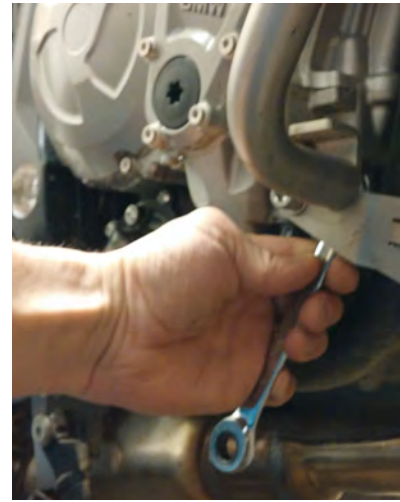
- ⑱ Tighten (3) M10 lower engine bracket screws to 25 N-m.



- ⑲ Tighten right side M10 engine mount bolt to 40 N-m.



- ⑳ Tighten M8 left side frame mount bolt to 15 N-m.



- ㉑ Use 13mm open-end wrench and tighten the M8 hex cap screws from behind the brackets on right and left side.



- ㉒ Tighten all M8 bolts on front low brackets and cross tube to 15 N-m.



- ㉓ Reinstall lower fairing. Right side torx screw attaches to threaded hole in AltRider bracket. Otherwise installation is reverse of removal.

CONGRATULATIONS!

You've completed your installation. If at any point you have questions about your installation or have any feed back for us, we'd love to hear it. A downloadable version of these instructions can be found at our web site. www.AltRider.com

After 5 hours of riding, or 100 miles, check all the fasteners on the assembly to ensure they are tightened to spec.

Global Office:

email: info@AltRider.com
phone: +1 206-922-3618
address: 4000 Aurora Ave N
Ste 100
Seattle, WA 98103

Europe Office:

email: info@AltRider.eu
address: AltRider EU
Heliumstraat 230
2718 RS Zoetermeer
The Netherlands

TERMS OF USE, WARRANTY AND LIABILITY WAIVER

AltRider LLC, a Washington company, having its principal place of business in Seattle, WA ("AltRider") offers its motorcycle accessories (the "Product") with the terms, conditions and notices as follows:

Terms of Use

This Product is offered to you conditioned upon your acceptance without modification of the terms, conditions, and notices contained herein. Installation and/or use of this product implies acceptance of all such terms, conditions, and notices. If you do not agree to these terms, do not buy the Product. If you have already bought the Product and do not agree to these terms, return this Product promptly including the packaging and all written materials, to AltRider.

Limitation of Liability and Warranty Disclaimer

You may return your merchandise for a full refund or exchange, less any original or return shipping fees under these conditions:

1. Only if the merchandise is in 100% factory condition. Original manufacturer's packaging and same condition as sold – original boxes, packaging material, instructions, documentation, parts, and attached tags.
2. Only unused, unscratched, uninstalled, undamaged merchandise will be accepted. Do not install equipment until you are sure you want to keep it. Package items carefully in protective materials before returning them. Never ship an item in its original manufacturers packaging – it will arrive damaged. Please use a postal box or other adequate packaging to ensure your return or exchange is not damaged on the way back to AltRider.com.

To read more about our exchanges and returns policy, on the web, navigate to <http://www.altrider.com/info/exchangesAndReturns>

Excepting the warranties stated in the preceding paragraph, AltRider hereby disclaims all other warranties and conditions with regard to the Product including all implied warranties and conditions of merchantability and fitness for a particular purpose. There are no warranties which extend beyond the description on the face hereof. AltRider does not warrant against damages or defects arising out of use or installation of the Product. Installation instructions are provided for your convenience. AltRider is not responsible for any damages arising out of the installation, improper or otherwise, of the Product. No warranty of any kind, expressed or implied, is made regarding the safety of this Product.

To the extent allowed by law, AltRider shall not be held liable for any direct, indirect, punitive, incidental, special or consequential damages arising out of, or connected with, the use or misuse of this Product. Buyer assumes all risks and liability arising from use of this Product.

Entire Agreement

This document states the entire obligation of AltRider with respect to the Product. If any part of this agreement is determined to be void, invalid, unenforceable or illegal, including, but not limited to the warranty disclaimers and liability limitations set forth above, then the remainder of the agreement shall remain in full force and effect.

Applicable Law

This agreement is governed by the laws of Washington, USA. You hereby consent to the exclusive jurisdiction and venue of the courts of Washington, USA, in all disputes arising out of or relating to the use of this product.

