



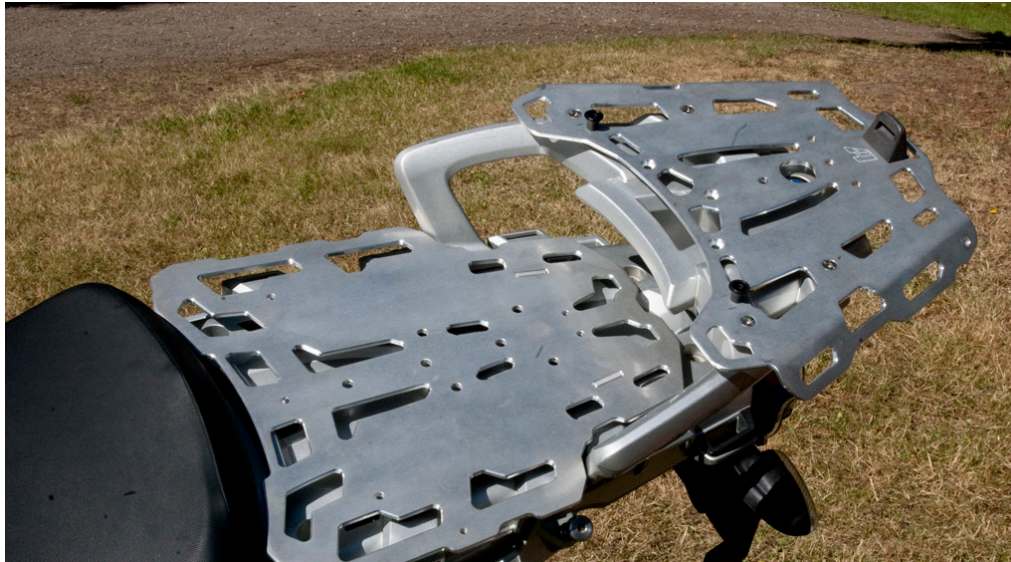
AltRider Luggage Rack System for BMW R 1200 GS INSTALLATION INSTRUCTIONS

The most up to date instructions can be downloaded from the product page at altrider.com, under the instructions tab.

Dear Rider,
Thank you for choosing AltRider! Whether a seasoned world adventurer or a first time ADV-Newbie, we welcome you to the AltRider experience. You can install your new product with the utmost confidence. AltRider designs, tests, and manufactures all of its products here in the United States. We are proud to do what we do, and honored to present to you the product of our labors.

Enjoy it, show it off, and most of all, RIDE IT!

Venture On,
Jeremy LeBreton



**AltRider Luggage Rack System for
BMW R 1200 GS**

Package Contents:
- luggage rack(s)
- Hardware kit

AltRider LLC

Global

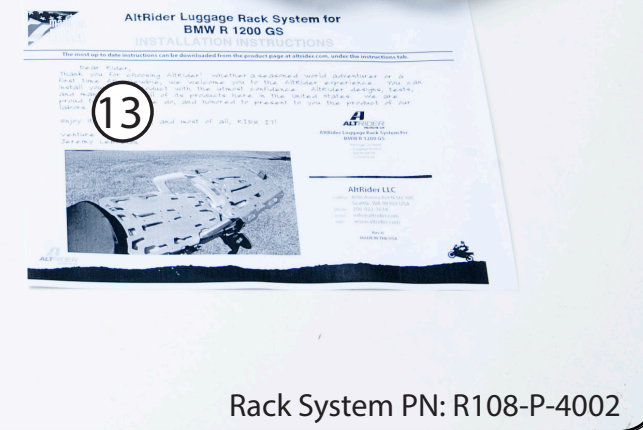
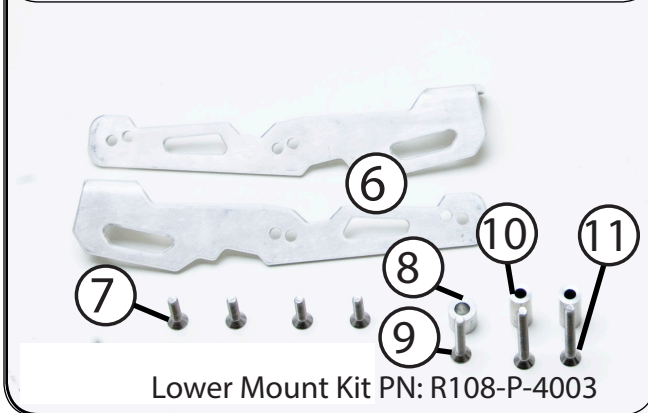
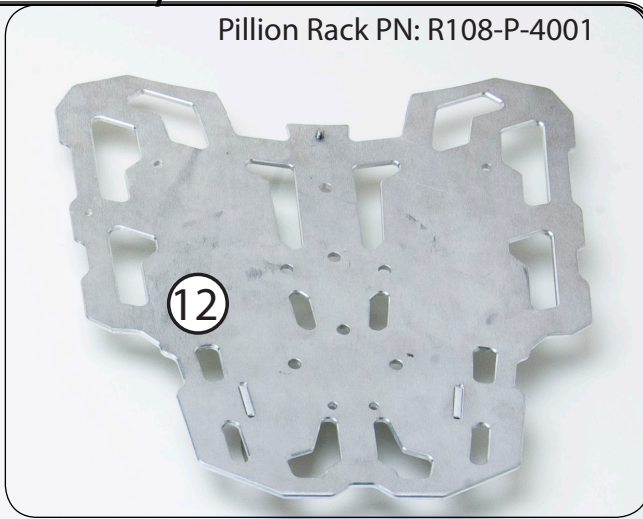
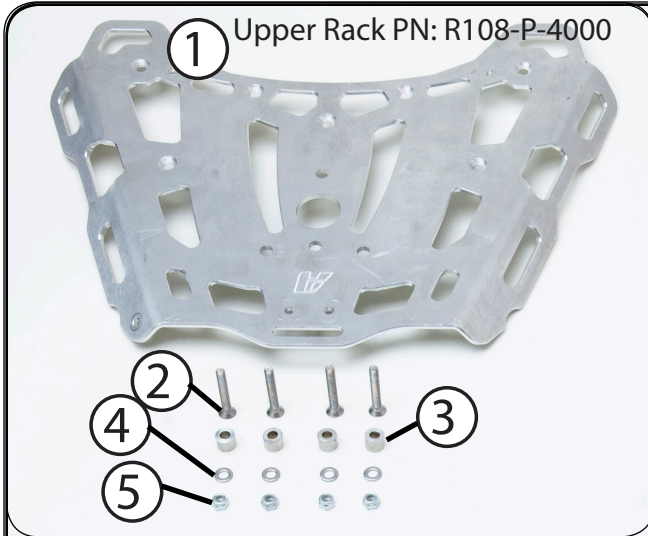
mailing: 4000 Aurora Ave N Ste 100
Seattle, WA 98103 USA
phone: 206-922-3618
email: info@altrider.com
web: www.altrider.com

Europe

mailing: Oude Middenweg 231-M
2491 AG DEN HAAG
Netherlan
email: info@altrix2.eu
web: www.altrider.eu

Rev 3
MADE IN THE USA





Kit:

- ① AltRider Rear Rack
- ② (4) M6 x 45 flat head fasteners
- ③ (4) M6 aluminum spacers
- ④ (4) M6 washers
- ⑤ (4) M6 locking nuts
- ⑥ left and right mounting brackets
- ⑦ (4) M6 x 18 flat head fasteners
- ⑧ (1) M6 short spacer
- ⑨ (1) M6 x 30 flat head fastener
- ⑩ (2) M6 long spacers
- ⑪ (2) M6 x 45 flat head fasteners
- ⑫ AltRider Pillion Rack
- ⑬ instructions in english

Recommended tools:

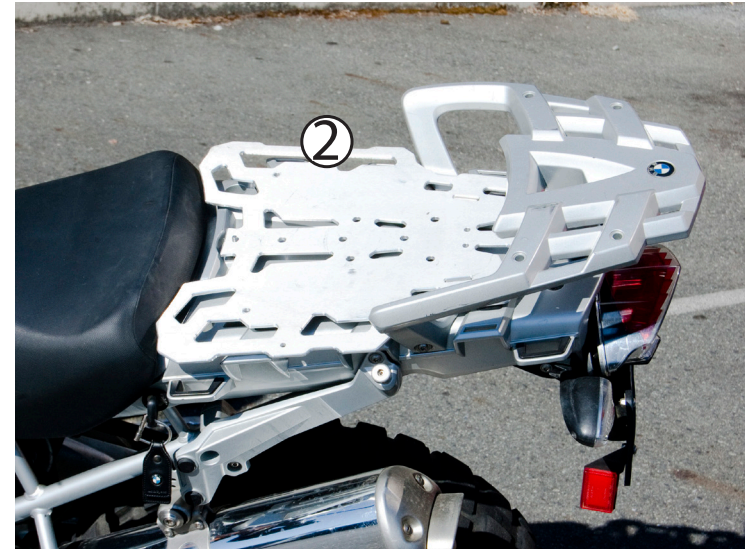
- ① hardware tray
- ② 1/4" ratchet
- ③ 1/4" driver
- ④ 10mm wrench
- ⑤ 4mm allen tool
- ⑥ 10mm socket
- ⑦ T-30 torx tool



Section 1: Pillion Rack



- ① Using your BMW key, remove the pillion (passenger) seat.

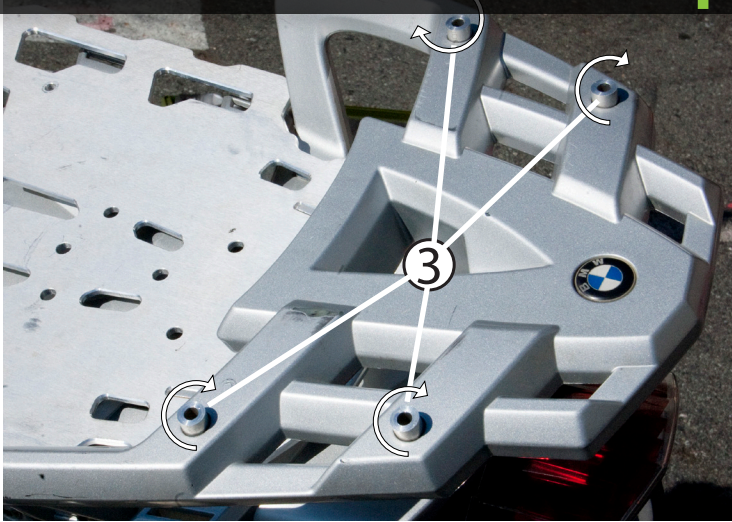


- ② Insert the AltRider Pillion Rack in the same way you attach the pillion seat.



Pillion rack is **VERY TIGHT** when installed and removed for the first couple of times. This is an intentional part of our design and is meant to prevent a sloppy fitment and rattling in the future. Certain points will naturally wear down into a perfect fit as time passes.

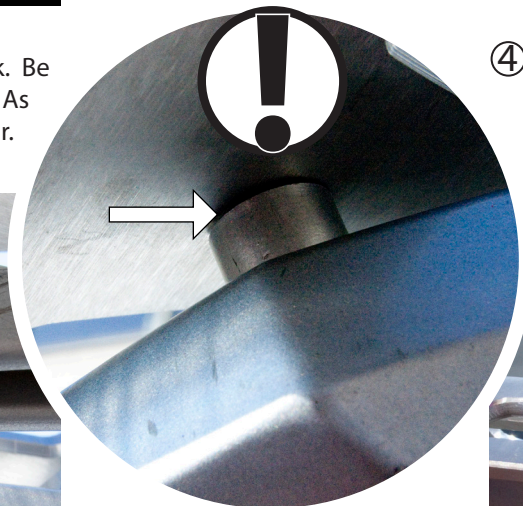
Section 2: Rear Rack Upper



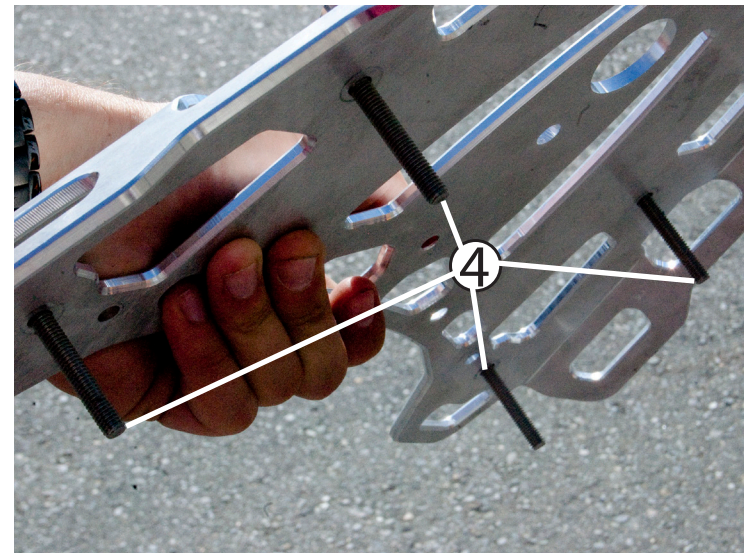
- ③ Place the M6 spacers as shown on the OEM plastic rack. Be sure to place them so that the angle-cut side is down. As best you can, rotate them so that the tops are all planar.



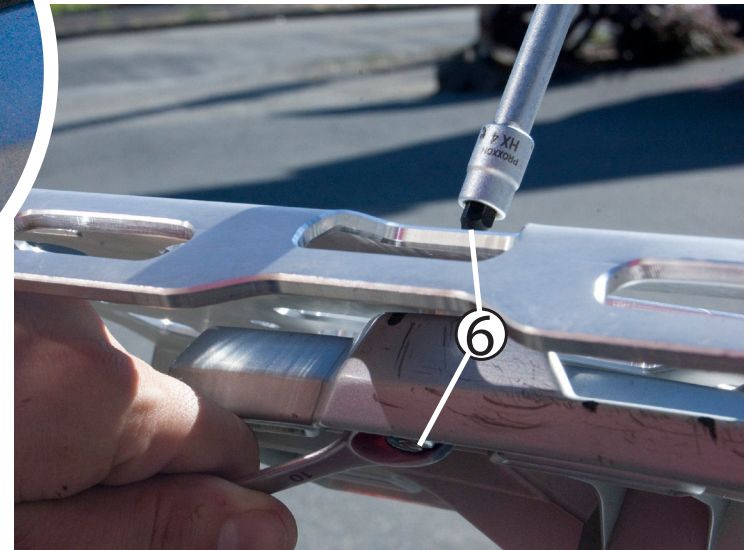
- ⑤ Place an M6 washer and locking nut on the end of each of the (4) fasteners and get them started, do not tighten these down just yet.



You may need to rotate your spacers to ensure the luggage rack sits flat. Rotate the spacers while the hardware is loose until there are no gaps.

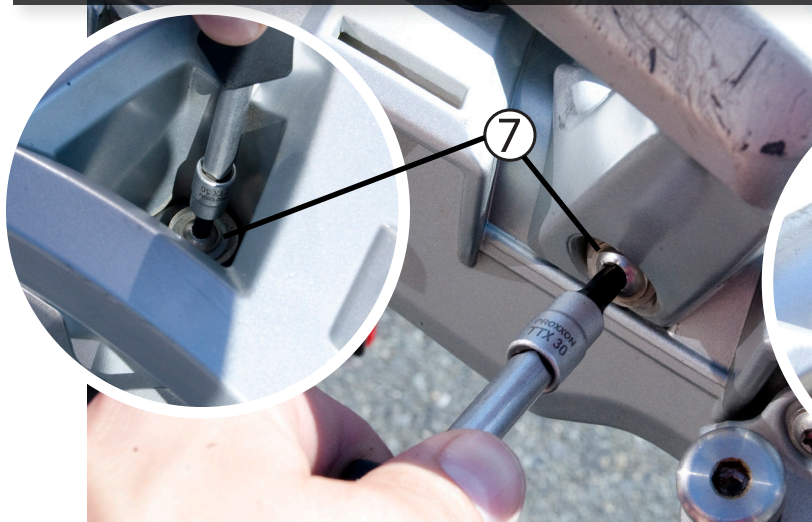


- ④ Put the (4) M6 x 45 flat head fasteners in the AltRider Rack and put it on the OEM rack, lining up the fasteners with the spacers.



- ⑥ Once you are sure that all spacers are lined up properly, move on to tightening. Using a 10mm wrench and a 4mm allen tool, tighten all 4 fasteners all the way down -- not too tight, or the plastic will break.

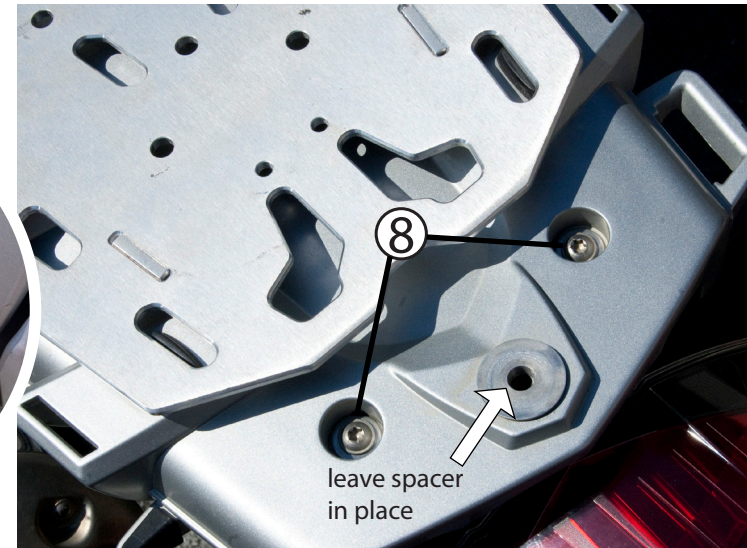
Section 3: Rear Rack Lower



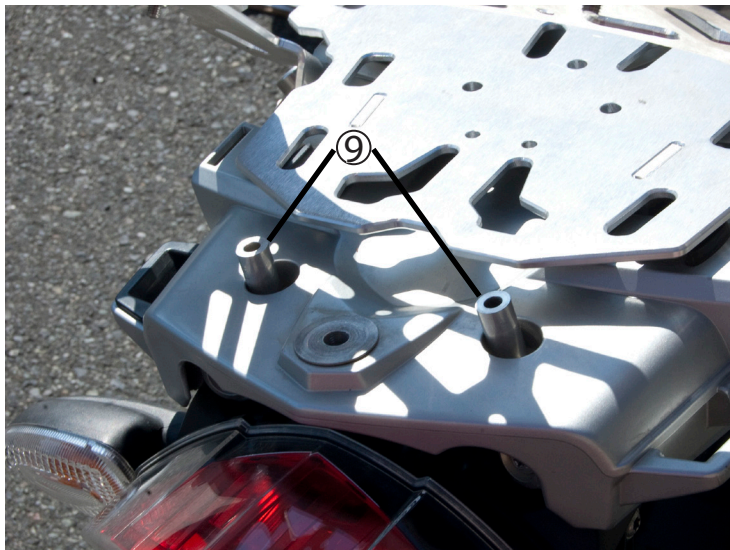
- ⑦ Using a T-30 torx tool, remove the (2) side fasteners and the (1) center fastener that hold the OEM rack in place. Remove the OEM rack. You will reuse the (2) side fasteners, but not the center fasteners or spacers.



Be sure to keep these OEM spacers in place.



- ⑧ Using a T-30 torx tool, remove the (2) OEM fasteners from the plastic tail platform. Ensure that the large aluminum spacer is still in place.



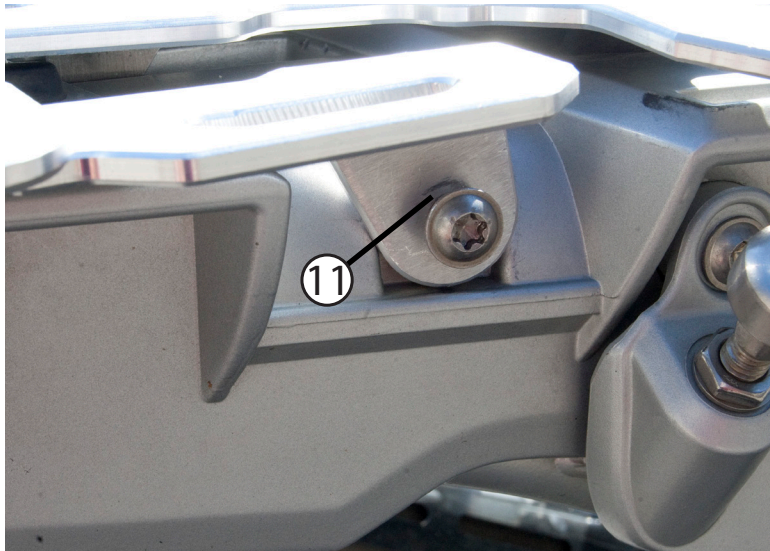
- ⑨ Insert the (2) long M6 spacers. Put the one shorter center M6 spacer in now.



Here is an image of the shorter center M6 spacer.



- ⑩ Insert the (3) M6 x 40 fasteners using a 4 mm allen tool get the fasteners started and leave them loose.



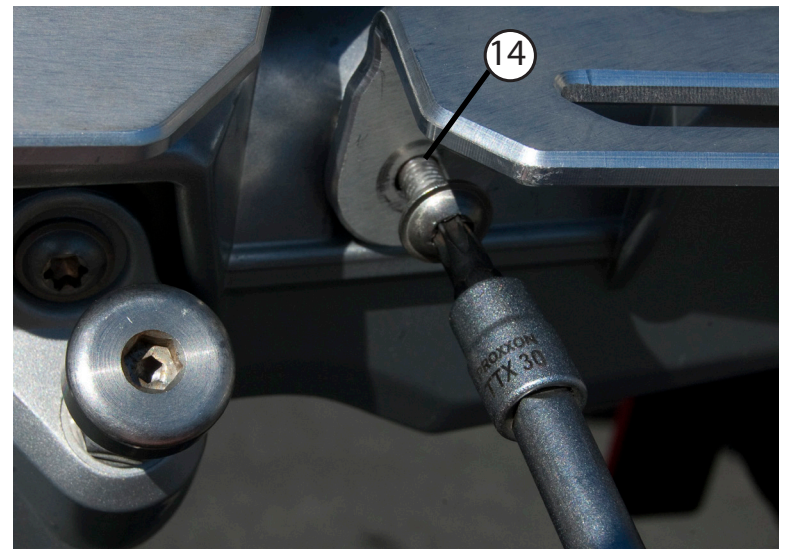
- ⑪ Re-insert the (2) OEM T-30 torx fasteners in either side and get them started, do not tighten these all the way down yet. DO NOT forget the OEM spacers behind the bracket.



- ⑫ Using a 10mm wrench and a 4mm allen tool, attach the (2) provided brackets to the luggage rack with (4) M6 x 18, (4) M6 washers and (4) M6 locking nuts.



- ⑬ Tighten down the (3) M6 x 40 fasteners using a 4mm allen tool.



- ⑭ Using a T-30 torx tool, tighten the two side fasteners all the way down.

Section 4: Configuration Examples



- (a) Giant Loop Great Basin Saddlebag - GIAN-P-4201
 AltRider Rear Rack - R108-P-4000
 Givi MonoKey adapter kit - GIVI-1-4103
 Givi Trekker Sidecase/Topcase - GIVI-1-4104
 AltRider Lower mount Bracket Kit - R108-P-4003



- (b) AltRider Luggage Rack System - R108-P-4002
 RotopaX Locking Mount - ROTO-1-7111
 RotopaX Mount Extension - ROTO-1-7112
 RotopaX 2 Gallon Gasoline Pack - ROTO-1-7115
 RotopaX 1 Gallon Gasoline Pack - ROTO-1-7100
 AltRider Lower mount Bracket Kit - R108-P-4003



- (c) AltRider Luggage Rack System - R108-P-4002
 Gsessories Tailgunner - TAIL-1-4100
 RotopaX Locking Mount - ROTO-1-7111
 RotopaX 1 Gallon Gasoline Pack - ROTO-1-7100



- (d) AltRider Luggage Rack System - R108-P-4002
 RotopaX Locking Mount - ROTO-1-7111
 RotopaX Locking Mount - ROTO-1-7111
 RotopaX 1 Gallon Gasoline Pack - ROTO-1-7100
 RotopaX 2 Gallon Gasoline Pack - ROTO-1-7115
 Redverz Tenere Expedition Tent - NOMA-1-6000



- (e) Giant Loop Great Basin Saddlebag - GIAN-P-4201
 AltRider Rear Rack - R108-P-4000
 RotopaX Locking Mount - ROTO-1-7111
 RotopaX 1 Gallon Gasoline Pack - ROTO-1-7100



- (f) AltRider Rear Rack - R108-P-4000
 Givi MonoKey adapter kit - GIVI-1-4103
 Givi Trekker Sidecase/Topcase - GIVI-1-4104

CONGRATULATIONS!

You've completed your installation. If at any point you have questions about your installation or have any feed back for us, we'd love to hear it. A downloadable version of these instructions can be found at our web site. www.AltRider.com

After 5 hours of riding, or 100 miles, check all the fasteners on the assembly to ensure they are tightened to spec.

Global Office:

email: info@AltRider.com
phone: +1 206-922-3618
address: 4000 Aurora Ave N
Ste 100
Seattle, WA 98103

Europe Office:

email: info@AltRider.eu
address: Oude Middenweg 231-M
2491 AG DEN HAAG
Netherlands

TERMS OF USE, WARRANTY AND LIABILITY WAIVER

AltRider LLC, a Washington company, having its principal place of business in Seattle, WA ("AltRider") offers its motorcycle accessories (the "Product") with the terms, conditions and notices as follows:

Terms of Use

This Product is offered to you conditioned upon your acceptance without modification of the terms, conditions, and notices contained herein. Installation and/or use of this product implies acceptance of all such terms, conditions, and notices. If you do not agree to these terms, do not buy the Product. If you have already bought the Product and do not agree to these terms, return this Product promptly including the packaging and all written materials, to AltRider.

Limitation of Liability and Warranty Disclaimer

You may return your merchandise for a full refund or exchange, less any original or return shipping fees under these conditions:

1. Only if the merchandise is in 100% factory condition. Original manufacturer's packaging and same condition as sold – original boxes, packaging material, instructions, documentation, parts, and attached tags.
2. Only unused, unscratched, uninstalled, undamaged merchandise will be accepted. Do not install equipment until you are sure you want to keep it. Package items carefully in protective materials before returning them. Never ship an item in its original manufacturers packaging – it will arrive damaged. Please use a postal box or other adequate packaging to ensure your return or exchange is not damaged on the way back to AltRider.com.

To read more about our exchanges and returns policy, on the web, navigate to <http://www.altrider.com/info/exchangesAndReturns>

Excepting the warranties stated in the preceding paragraph, AltRider hereby disclaims all other warranties and conditions with regard to the Product including all implied warranties and conditions of merchantability and fitness for a particular purpose. There are no warranties which extend beyond the description on the face hereof. AltRider does not warrant against damages or defects arising out of use or installation of the Product. Installation instructions are provided for your convenience. AltRider is not responsible for any damages arising out of the installation, improper or otherwise, of the Product. No warranty of any kind, expressed or implied, is made regarding the safety of this Product.

To the extent allowed by law, AltRider shall not be held liable for any direct, indirect, punitive, incidental, special or consequential damages arising out of, or connected with, the use or misuse of this Product. Buyer assumes all risks and liability arising from use of this Product.

Entire Agreement

This document states the entire obligation of AltRider with respect to the Product. If any part of this agreement is determined to be void, invalid, unenforceable or illegal, including, but not limited to the warranty disclaimers and liability limitations set forth above, then the remainder of the agreement shall remain in full force and effect.

Applicable Law

This agreement is governed by the laws of Washington, USA. You hereby consent to the exclusive jurisdiction and venue of the courts of Washington, USA, in all disputes arising out of or relating to the use of this product.

